

OREGON DEPARTMENT OF FISH AND WILDLIFE ESMOND CREEK LOWER POST-TX (MC-137)

HABITAT INVENTORY

Report Date: 5/6/03

Survey Date:

2/10/03

REACH		T19S-R08W-S16NE						REACH					
HABITAT DETAIL													
Habitat Type	Number Units	Total Length (m)	Avg Width (m)	Avg Depth (m)	Total Area (m ²)	Large Boulders (#>0.5m)	Substrate						
							Percent Wetted Area						
							S/O	Snd	Grvl	Cbl	Bldr	Bdrk	
POOL-BACKWATER	1	17	4.0	0.50	67	0	0	5	85	10	0	0	
POOL-ISOLATED	1	3	0.9	0.15	3	0	35	59	6	0	0	0	
POOL-LATERAL SCOUR	9	414	10.6	0.96	4,426	0	3	13	19	2	2	62	
POOL-STRAIGHT SCOUR	2	50	8.5	0.90	430	0	0	3	23	3	3	70	
RIFFLE	1	23	9.0	0.25	203	0	0	0	53	5	0	42	
STEP/BEDROCK	1	8	7.5	0.20	60	0	0	0	53	0	5	42	
STEP/COBBLE	4	41	8.9	0.29	406	0	0	3	79	8	1	9	
Total:	19	555	8.9	0.67	5,594	0	Avg 3	10	38	3	2	43	

HABITAT SUMMARY								
Habitat Group	Number Units	Total Length (m)	Avg Width (m)	Avg Depth (m)	Wetted Area		Large Boulders	
					(m ²)	Percent	Number	(# / 100m ²)
Dammed & BW Pools	2	20	2.5	0.33	70	1.24%	0	0.0
Scour Pools	11	464	10.2	0.95	4,856	86.81%	0	0.0
Glides	0	0			0	0.00%	0	0.0
Riffles	1	23	9.0	0.25	203	3.62%	0	0.0
Rapids	0	0			0	0.00%	0	0.0
Cascades	0	0			0	0.00%	0	0.0
Step/Falls	5	49	8.6	0.27	466	8.33%	0	0.0
Dry	0	0			0	0.00%	0	0.0
Culverts	0	0			0	0.00%	0	0.0

POOL SUMMARY		
	<u>Total</u>	<u># / Km</u>
All Pools:	13	25.2
Pools >=1m deep:	6	11.6
Complex pools (LWD pieces>=3):	4	7.8
Pool frequency (channel widths/pool):	3.4	
Residual pool depth (avg):	0.63	

STREAM SUMMARY

ESMOND CREEK LOWER POST-TX (MC-137)

Number Units	Total Length (m)	Avg Width (m)	Avg Depth (m)	Total Area (m ²)	Substrate Percent Wetted Area						Large Boulders (>0.5m)
					S/O	Snd	Grvl	Cbl	Bldr	Bdrk	
19	555	8.9	0.67	5,594	3	10	38	3	2	43	

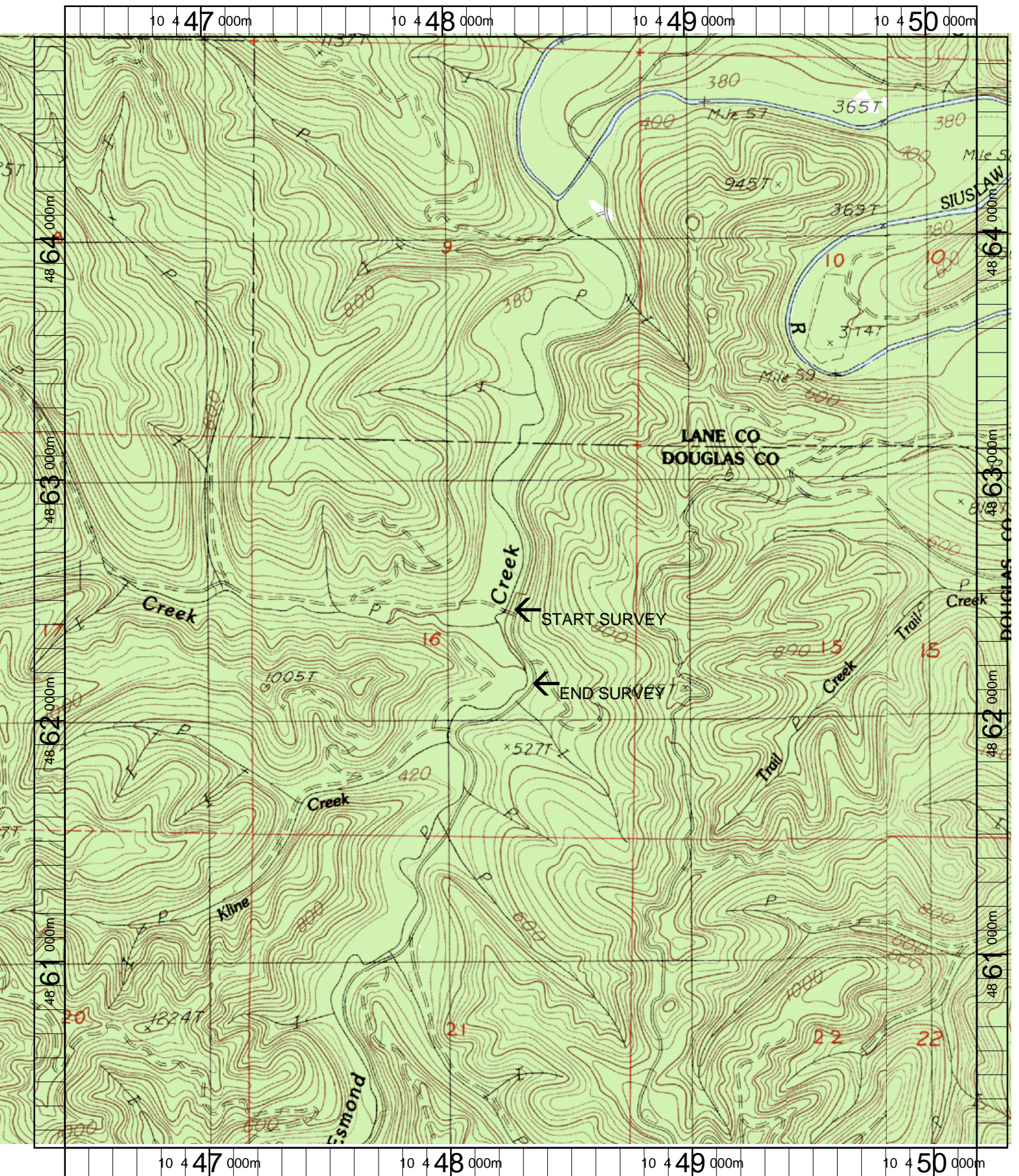
Habitat Group	Wetted Area	
	(m ²)	Percent
Dammed & BW Pools	70	1.24%
Scour Pools	4,856	86.81%
Glides	0	0.00%
Riffles	203	3.62%
Rapids	0	0.00%
Cascades	0	0.00%
Step/Falls	466	8.33%
Dry	0	0.00%
Culverts	0	0.00%

Comment Summary

Restoration Monitoring Sites 2003

MONITORING AREA: 2-MC SITE ID: 137 ESMOND CREEK LOWER POST-TX (MC-137)

<u>UNIT#</u>	<u>TYPE</u>	<u>CHAN</u>	<u>DIST. (m)</u>	<u>COMMENTS</u>	<u>NOTE ESTIMATOR</u>	<u>NOTE NUMERATOR</u>
1	SP	00	19.2	CS/CS, BC	START @ MIDPT AT SIGN	
2	LP	00	57.9	HS	LG BLRS	
4	LP	01	124	/SS		
7	LP	00	169.2	HS		
9	LP	01	256.8	/TJ, HS	"SITE 2" ORANGE FLAG, 5	
10	SR	11	256.8		25% FLOW, AQU INV 7-21-	
12	LP	00	298.9	HS, DJ	"SITE 4", ORANGE FLAG	
13	LP	01	370.8		ORANGE FLAG	
16	LP	00	437.9	SS/	"2 UNSA 4/2/01" STHD RE	
17	SP	00	468.6		T=6C, REDD	
18	SC	00	475.1		UNSA FLAG "3/10/01, 6 RE	
19	LP	00	515.1	BV,TJ, SS/	AQU INV FLAG "6-21-00 U	



Name: ROMAN NOSE MT
 Date: 3/20/2003
 Scale: 1 inch equals 1666 feet

Location: 10 448303 E 4862522 N
 Caption: ESMOND CREEK (LOWER) RESTORATION SITE -
 SIUSLAW BASIN