

ODFW AQUATIC INVENTORY PROJECT
OREGON PLAN FOR SALMON & WATERSHEDS
STREAM RESTORATION HABITAT REPORT

STREAM: Fishhawk Creek (NC-390)
BASIN: Nehalem River
SURVEY TYPE: Pre-Tx
DATE: March 12, 2008
SURVEY CREW: Sharon Tippery, Matt Weeber
REPORT PREPARED BY: Sharon Tippery
BASIN AREA: 48.5 km²
USGS MAPS: Nicolai Mountain
ECOREGION: Coast Range Willapa Hills

GENERAL DESCRIPTION:

The Fishhawk Creek habitat survey extended 497 meters. A single channel was unconstrained in a wide floodplain. The average valley width index was 9.1 (range: 2.5-14). Land use for the reach was second growth timber (15-30cm dbh) and large growth timber (30-50cm dbh). The average unit gradient was 0.1 percent. Scour pools (88%) dominated stream habitat. Sand (67%) and silt/organics (22%) dominated stream substrate. Wood volume was 7.9m³/100m.

COMMENTS:

There were no potential barriers to upstream fish migration in the surveyed length.

The crew noted a large manmade trench parallel to the first lateral scour pool in the survey.

Minimal beaver activity was noted in the survey.

OREGON DEPARTMENT OF FISH AND WILDLIFE

FISHHAWK CREEK

HABITAT INVENTORY

GCG: 1-NC SITE ID: 390

Survey Date: 3/12/2008

Report Date: 5/6/2008

T07N-R06W-S25SW

REACH 1

HABITAT DETAIL

Habitat Type	Number Units	Total Length (m)	Avg Width (m)	Avg Depth (m)	Total Area (m ²)	Large Boulders (#>0.5m)	Substrate Percent Wetted Area					
							S/O	Snd	Grvl	Cbl	Bldr	Bdrk
CASCADE/BOULDERS	1	8	0.5	0.07	4	0	30	40	30	0	0	0
GLIDE	1	10	5.5	0.35	55	0	25	75	0	0	0	0
POOL-LATERAL SCOUR	13	444	4.5	1.08	1,950	0	22	69	4	1	1	3
RIFFLE	5	61	3.5	0.32	193	0	19	64	15	0	0	2
Total:	20	523	4.1	0.80	2,202	0	Avg: 22	67	8	1	1	2

HABITAT SUMMARY

Habitat Group	Number Units	Total Length (m)	Avg Width (m)	Avg Depth (m)	Wetted Area		Large Boulders	
					(m ²)	Percent	Number	(# / 100m ²)
Dammed & BW Pools	0	0			0	0.00%	0	0.0
Scour Pools	13	444	4.5	1.08	1,950	88.57%	0	0.0
Glides	1	10	5.5	0.35	55	2.50%	0	0.0
Riffles	5	61	3.5	0.32	193	8.75%	0	0.0
Rapids	0	0			0	0.00%	0	0.0
Cascades	1	8	0.5	0.07	4	0.18%	0	0.0
Step/Falls	0	0			0	0.00%	0	0.0
Dry	0	0			0	0.00%	0	0.0
Culverts	0	0			0	0.00%	0	0.0

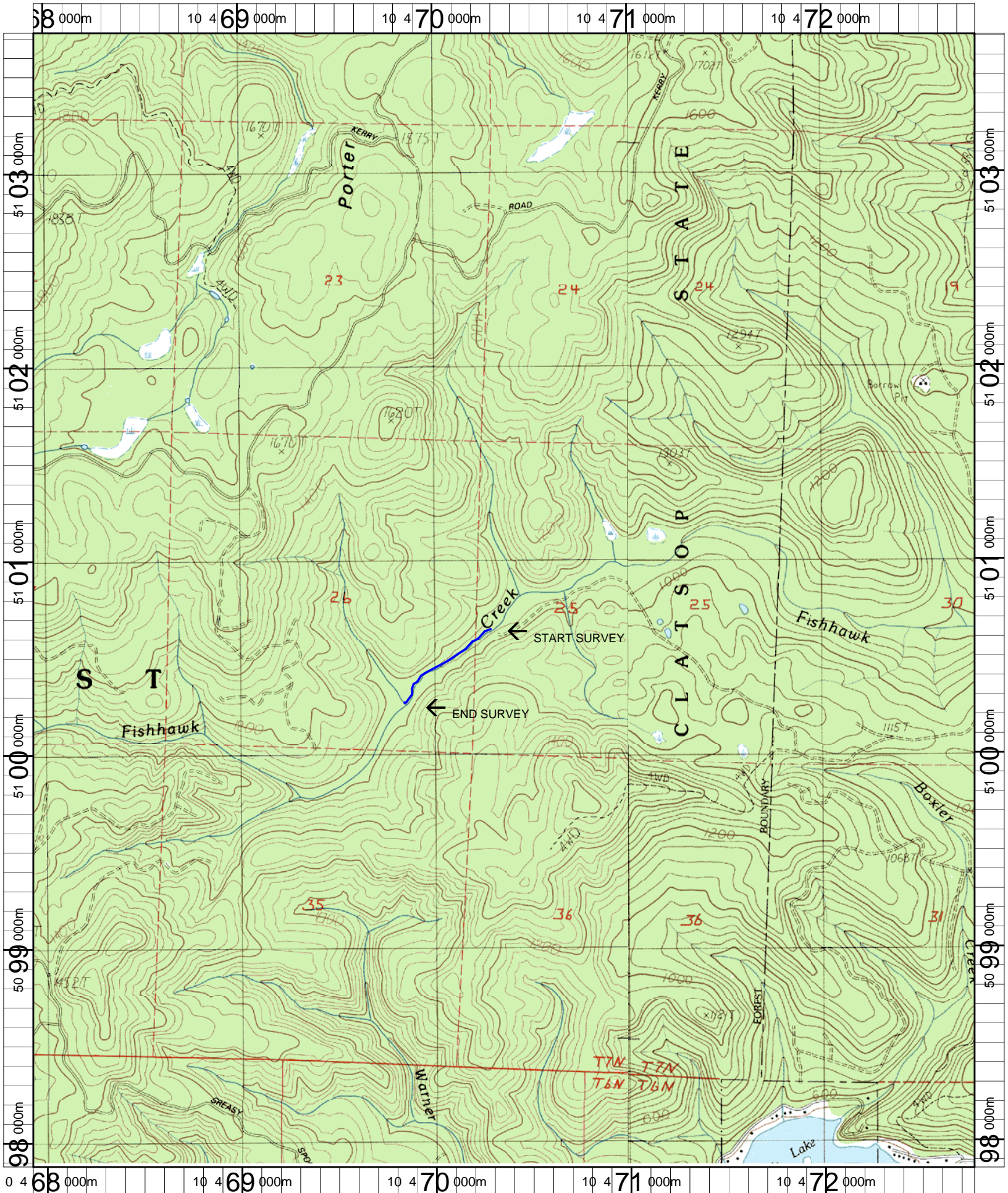
POOL SUMMARY

	Total	Total of all Channel Lengths # / Km	Primary Channel Length # / Km
All Pools:	13	24.9	26.2
Pools >=1m deep:	9	17.2	18.1
Complex pools (LWD pieces>=3):	7	13.4	14.1
Pool frequency (channel widths/pool):	7.2		
Residual pool depth (avg):	0.71		

COMMENT SUMMARY

MONITORING AREA: 1-NC SITE ID: 390 STREAM: FISHHAWK CREEK

UNIT#	TYPE	CHAN	DIST. (m)	COMMENTS	NOTES
1	LP	00	73		LARGE MANMADE TRENCH PARALLELS UNIT ON LEFT SIDE, STANDING WATER
2	LP	00	109	SS/	LONG SLOW MOVING LP'S
3	RI	00	113		HARDPAN
4	LP	00	133	BV	ALL BEDROCK IS HARDPAN
7	LP	00	194.9	SS/	
9	LP	00	281.4	/SS X3	
14	RI	01	362.9	TJ/	
15	CB	11	362.9		ACW=0.7M
19	LP	01	496.5	/TJ	
20	RI	11	496.5		ACW=2.6M, END TRIB



Name: NICOLAI MT
 Date: 12/18/2007
 Scale: 1 inch equals 2000 feet

Location: 10 0470358 E 5100793 N NAD 27
 Caption: FISHHAWK CREEK RESTORATION SURVEY - NEHALEM BASIN