

ODFW AQUATIC INVENTORY PROJECT
OREGON PLAN FOR SALMON & WATERSHEDS
STREAM RESTORATION HABITAT REPORT

STREAM: Elliott Creek (N-337)
BASIN: Wilson River
SURVEY TYPE: Pre-Tx
DATE: February 5, 2007
SURVEY CREW: Brian Bangs, Scott Sebring
REPORT PREPARED BY: Paul Jacobsen
BASIN AREA: 8.8 km²
USGS MAPS: Woods Point
ECOREGION: Coast Range Volcanic

GENERAL DESCRIPTION:

The Elliott Creek habitat survey extended 1,249 meters. The channel was unconstrained by terraces in a broad valley floor. The average valley width index was 3.7 (range: 1.8-6.5). Land use for the reach was second growth (15-30 cm dbh) and young (3-15 cm dbh) trees. The average unit gradient was 3.4 percent. Rapids (66%) and scour pools (21%) dominated stream habitat. Gravel (41%) and cobble (27%) dominated stream substrate. Wood volume was low at 16.3 m³/100m.

COMMENTS:

There were no potential barriers to upstream fish migration in the surveyed length.

The crew noted several habitat structures during the survey.

REACH 1

T02N-R06W-S35SE

REACH 1

Valley and Channel Summary

Valley Characteristics (Percent Reach Length)

<u>Narrow Valley Floor</u>		<u>Broad Valley Floor</u>	
Steep V-shape	0%	Constraining Terraces	0%
Moderate V-shape	0%	Multiple Terraces	100%
Open V-shape	0%	Wide Floodplain	0%
Valley Width Index	3.7	VWI Range:	1.8 - 6.5

Channel Morphology (Percent Reach Length)

<u>Constrained</u>		<u>Unconstrained</u>	
Hillslope	0%	Single Channel	100%
Bedrock	0%	Multiple Channel	0%
Terrace	0%	Braided Channel	0%
Alt. Terrace/Hill	0%		
Landuse	0%		

Channel Characteristics

<u>Type</u>	<u>Length (m)</u>	<u>Area (m2)</u>	<u>Dry Units</u>
Primary Channel	1,249	7,189	0
Secondary Channel	294	698	3
Off-Channel Units	60	39	0

Channel Dimensions (m)

<u>Wetted</u>	<u>Active</u>	<u>Floodprone</u> n = 5	<u>First Terrace</u> n = 3
Width: 4.7	Width: 10.7	23.0 (12.9 - 45.4)	19.2 (15 - 26.4)
Depth: 0.36	Height: 0.6	1.2 (1.1 - 1.4)	1.7 (1.4 - 1.9)

W:D ratio: 17.5
 Stream Flow Type: MF
 Average Unit Gradient: 3.4%
 Water temperature (°C): 5.0 - 5.0

Entrenchment (ACW:FPW ratio): 2.4
 Habitat Units/100m (total channel length): 4.6
 Habitat Units/100m (primary channel length): 5.8

Riparian, Bank, and Wood Summary

	<u>Primary</u>	<u>Secondary</u>
Land Use:	ST	YT
Riparian Vegetation:	D30	S

Bank Condition and Shade

<u>Bank Status</u>	<u>Percent Reach Length</u>	<u>Shade (% of 180)</u>
Actively Eroding:		Reach avg:
Undercut Banks:		Range: -

Large Wood Debris

	<u>Total</u>	<u>Total / 100m primary channel</u>
All pieces (>=3m x 0.15m):	215	17.2
Volume (m ³):	204	16.3
Key pieces (>=12m x 0.60m):	5	0.4

OREGON DEPT OF FISH AND WILDLIFE

ELLIOTT CREEK PRE-TX (1-NC, 3370)

HABITAT INVENTORY

Report Date: 4/25/2007

Survey Date:

2/5/2007

REACH 1		T02N-R06W-S35SE					REACH 1					
HABITAT DETAIL												
Habitat Type	Number Units	Total Length (m)	Avg Width (m)	Avg Depth (m)	Total Area (m ²)	Large Boulders (#>0.5m)	Substrate Percent Wetted Area					
							S/O	Snd	Grvl	Cbl	Bldr	Bdrk
CASCADE/BOULDERS	8	81	2.1	0.07	272	0	7	16	48	24	4	0
DRY CHANNEL	1	27	9.0	0.00	239	0	80	0	0	20	0	0
POOL-LATERAL SCOUR	25	305	5.5	0.79	1,678	0	7	18	38	26	11	1
PUDDLED UNIT	2	66	1.5	0.10	104	0	8	25	33	25	10	0
RAPID/BOULDERS	29	1,038	4.7	0.16	5,224	0	6	9	46	28	11	0
RIFFLE	3	64	4.2	0.15	303	0	8	13	54	21	4	0
STEP/COBBLE	4	20	5.2	0.16	99	0	7	6	28	38	21	0
STEP/LOG	1	1	7.0	0.05	7	0	0	10	30	40	20	0
Total:	73	1,603	4.7	0.36	7,926	0	Avg: 8	13	41	27	10	0

HABITAT SUMMARY									
Habitat Group	Number Units	Total Length (m)	Avg Width (m)	Avg Depth (m)	Wetted Area		Large Boulders		
					(m ²)	Percent	Number	(# / 100m ²)	
Dammed & BW Pools	0	0			0	0.00%	0	0.0	
Scour Pools	25	305	5.5	0.79	1,678	21.18%	0	0.0	
Glides	0	0			0	0.00%	0	0.0	
Riffles	3	64	4.2	0.15	303	3.82%	0	0.0	
Rapids	29	1,038	4.7	0.16	5,224	65.91%	0	0.0	
Cascades	8	81	2.1	0.07	272	3.43%	0	0.0	
Step/Falls	5	21	5.5	0.14	106	1.34%	0	0.0	
Dry	3	93	4.0	0.07	342	4.32%	0	0.0	
Culverts	0	0			0	0.00%	0	0.0	

POOL SUMMARY			
	<u>Total</u>	Total of all Channel Lengths	Primary Channel Length
		<u># / Km</u>	<u># / Km</u>
All Pools:	25	15.6	20.0
Pools >=1m deep:	2	1.2	1.6
Complex pools (LWD pieces>=3):	10	6.2	8.0
Pool frequency (channel widths/pool):	6.0		
Residual pool depth (avg):	0.60		

Comment Summary

Restoration Monitoring Sites 2007

MONITORING AREA: 1-NC SITE ID: 3370 ELLIOTT CREEK PRE-TX

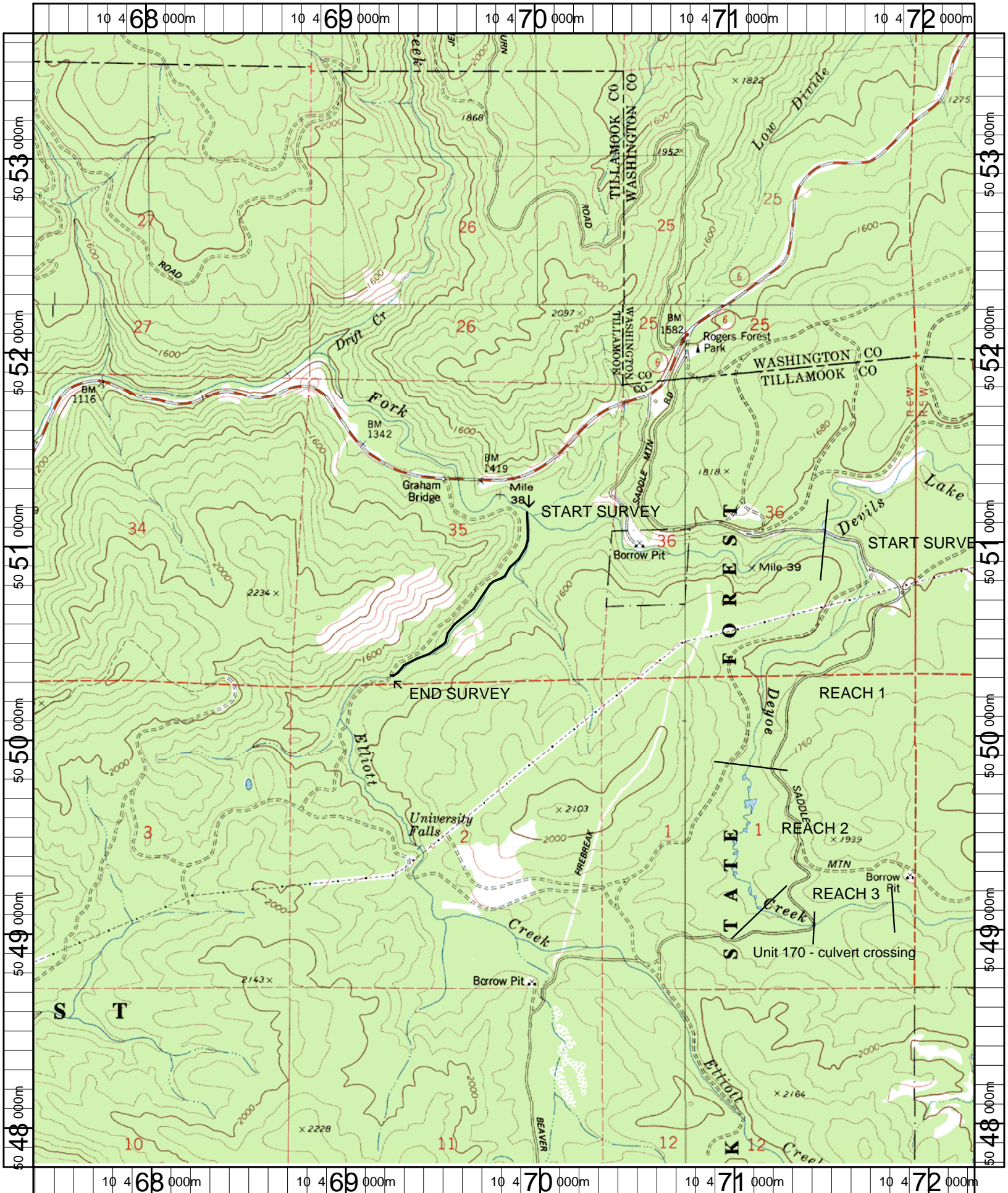
UNIT#	TYPE	CHAN	DIST. (m)	COMMENTS	NOTE ESTIMATOR
1	RB	01	39.3	BV	
5	RB	00	62	BV	US/MT/D30/S/ST
9	RB	00	141.3	BV, HS	3 OLD CABLED LOGS
12	LP	00	167.2	HS	3 OLD CABLED LOGS
15	LP	00	208.7	HS	3 OLD CABLED LOGS
16	SC	00	217.8		DEBRIS
17	LP	01	228.4	TJ/	
18	CB	11	228.4		T=5.0C, ACW=0.80M
21	SL	00	247.7	HS	H=0.30M
22	LP	00	259.4	HS	3 OLD CABLED LOGS
25	RB	01	356.7	TJ/	
26	CB	11	356.7		T=5.5C, ACW=2.00M
27	LP	00	364.9	HS	3 OLD CABLED LOGS
29	LP	00	480.3	HS	2 OLD CABLED LOGS
30	RB	00	495.8	HS	1 LOG, NOT CABLED
33	LP	00	529.9	WL	ELK TRAIL
34	RB	01	599.3	HS	5 CABLED LOGS, TO U35
36	LP	00	609.7	HS	3 OLD CABLED LOGS
37	RB	01	668.1	HS,TJ/	
38	CB	11	668.1		T=5.0C, ACW=1.30M
39	RB	02	668.1	WL	ELK TRAILS

Comment Summary

Restoration Monitoring Sites 2007

MONITORING AREA: 1-NC SITE ID: 3370 ELLIOTT CREEK PRE-TX

UNIT#	TYPE	CHAN	DIST. (m)	COMMENTS	NOTE ESTIMATOR
41	RB	00	701.9		T=6.0C
42	LP	00	722		US/MT/D30/S/ST/YT
44	LP	00	760.5	/SS	
49	LP	01	809.5	/TJ	
52	LP	00	876.2	HS	3 OLD CABLED LOGS
54	LP	01	902.6	LA/	VERY RECENT, WATER DOWNSTREAM
55	RB	01	961.9		IS A BIT CLOUDY
58	RB	02	980.5	TJ/	
59	CB	11	980.5		ACW=1.00M
61	RB	03	1007.1		LOTS OF DEBRIS IN BRAIDED AREA
63	LP	00	1052.9	/LA	
64	RB	00	1101.6	/LA	CH/MV/D30/S/YT/ST
66	RB	00	1154.6	SS/, SS/	
68	RI	01	1190.3	TJ/TJ	
69	CB	11	1190.3		RIGHT, ACW=0.70M
70	CB	11	1190.3		LEFT, ACW=1.00M
72	LP	00	1214.4	SS/	
73	RB	00	1249.1		CT/CT/D30/S/ST/YT



Name: WOODS POINT
 Date: 4/25/2007
 Scale: 1 inch equals 2000 feet

Location: 10 0469827 E 5050713 N
 Caption: ELLIOTT CREEK RESTORATION SITE - DEVILS LAKE FORK
 WILSON BASIN