

**ODFW AQUATIC INVENTORY PROJECT**  
**OREGON PLAN FOR SALMON & WATERSHEDS**  
**STREAM RESTORATION HABITAT REPORT**

STREAM: Elliott Creek (N-337)  
BASIN: Wilson River  
SURVEY TYPE: Pre-Tx  
DATE: March 2, 2006  
SURVEY CREW: Brian Cannon, Jon Nott  
REPORT PREPARED BY: Paul Jacobsen  
BASIN AREA: 8.8 km<sup>3</sup>  
USGS MAPS: Woods Point  
ECOREGION: Coast Range Volcanic

**GENERAL DESCRIPTION:**

The Elliott Creek habitat survey extended 1,447 meters. The channel was unconstrained in a broad valley floor. The average valley width index was 3.1 (range: 1.5-4.0). Land use for the reach was large (30-50 cm dbh) trees. The average unit gradient was 2.0 percent. Rapids (45%) and scour pools (30%) dominated stream habitat. Gravel (30%) and cobble (30%) dominated stream substrate. Wood volume was moderate at 24.7 m<sup>3</sup>/100m.

**COMMENTS:**

There were no potential barriers to upstream fish migration in the surveyed length.

The crew noted several habitat structures during the survey.

REACH 1

T02N-R06W-S35NE

REACH 1

**Valley and Channel Summary**

Valley Characteristics (Percent Reach Length)

<u>Narrow Valley Floor</u>		<u>Broad Valley Floor</u>	
Steep V-shape	0%	Constraining Terraces	0%
Moderate V-shape	0%	Multiple Terraces	100%
Open V-shape	0%	Wide Floodplain	0%
Valley Width Index	3.1	VWI Range:	1.5 - 4

Channel Morphology (Percent Reach Length)

<u>Constrained</u>		<u>Unconstrained</u>	
Hillslope	0%	Single Channel	100%
Bedrock	0%	Multiple Channel	0%
Terrace	0%	Braided Channel	0%
Alt. Terrace/Hill	0%		
Landuse	0%		

Channel Characteristics

<u>Type</u>	<u>Length (m)</u>	<u>Area (m2)</u>	<u>Dry Units</u>
Primary Channel	1,447	7,725	0
Secondary Channel	569	862	6
Off-Channel Units	63	135	0

Channel Dimensions (m)

<u>Wetted</u>	<u>Active</u>	<u>Floodprone</u> n = 7	<u>First Terrace</u> n = 2
Width: 4.4	Width: 11.0	29.0 ( 12 - 50 )	15.0 ( 14 - 16 )
Depth: 0.40	Height: 0.8	1.5 ( 1.3 - 1.8 )	1.8 ( 1.6 - 2 )

W:D ratio: 14.8

Entrenchment (ACW:FPW ratio): 2.6

Stream Flow Type: MF

Habitat Units/100m (total channel length): 5.4

Average Unit Gradient: 2.0%

Habitat Units/100m (primary channel length): 7.7

Water temperature (°C): 5.0 - 5.0

**Riparian, Bank, and Wood Summary**

	<u>Primary</u>	<u>Secondary</u>
Land Use:	LT	
Riparian Vegetation:	D30	S

Bank Condition and Shade

<u>Bank Status</u>	<u>Percent Reach Length</u>	<u>Shade (% of 180)</u>
Actively Eroding:		Reach avg:
Undercut Banks:		Range: -

Large Wood Debris

	<u>Total</u>	<u>Total / 100m primary channel</u>
All pieces (>=3m x 0.15m):	329	22.7
Volume (m <sup>3</sup> ):	358	24.7
Key pieces (>=12m x 0.60m):	8	0.6

OREGON DEPT OF FISH AND WILDLIFE

ELLIOTT CREEK PRE-TX (1-NC, 337)

HABITAT INVENTORY

Report Date: 12/6/2006

Survey Date:

3/2/2006

REACH 1		T02N-R06W-S35NE					REACH 1					
HABITAT DETAIL												
Habitat Type	Number Units	Total Length (m)	Avg Width (m)	Avg Depth (m)	Total Area (m <sup>2</sup> )	Large Boulders (#>0.5m)	Substrate Percent Wetted Area					
							S/O	Snd	Grvl	Cbl	Bldr	Bdrk
CASCADE/BOULDERS	7	51	1.4	0.07	81	0	13	31	29	16	10	0
DRY CHANNEL	3	42	1.8	0.00	70	0	17	30	23	23	7	0
POOL-BACKWATER	3	22	4.5	0.65	101	0	21	49	24	7	0	0
POOL-DAMMED	3	24	6.2	0.83	145	0	16	29	48	7	0	0
POOL-LATERAL SCOUR	36	527	4.7	0.74	2,557	0	6	19	32	34	11	0
POOL-PLUNGE	2	9	4.3	0.78	38	0	10	30	35	20	5	0
PUDDLED UNIT	3	133	1.2	0.04	149	0	13	30	43	13	0	0
RAPID/BOULDERS	29	799	4.7	0.24	3,906	0	1	14	28	41	16	0
RIFFLE	11	426	4.0	0.21	1,413	0	5	18	31	36	10	0
STEP/COBBLE	9	41	5.7	0.17	238	0	1	12	35	34	18	0
STEP/LOG	6	6	5.4	0.15	24	0	39	43	18	0	0	0
<b>Total:</b>	112	2,079	4.4	0.40	8,722	0	<b>Avg:</b> 7	21	30	30	11	0

HABITAT SUMMARY									
Habitat Group	Number Units	Total Length (m)	Avg Width (m)	Avg Depth (m)	Wetted Area		Large Boulders		
					(m <sup>2</sup> )	Percent	Number	(# / 100m <sup>2</sup> )	
Dammed & BW Pools	6	46	5.4	0.74	246	2.82%	0	0.0	
Scour Pools	38	535	4.7	0.74	2,594	29.74%	0	0.0	
Glides	0	0			0	0.00%	0	0.0	
Riffles	11	426	4.0	0.21	1,413	16.20%	0	0.0	
Rapids	29	799	4.7	0.24	3,906	44.78%	0	0.0	
Cascades	7	51	1.4	0.07	81	0.93%	0	0.0	
Step/Falls	15	47	5.6	0.16	262	3.00%	0	0.0	
Dry	6	175	1.5	0.02	219	2.51%	0	0.0	
Culverts	0	0			0	0.00%	0	0.0	

POOL SUMMARY			
	<u>Total</u>	Total of all Channel Lengths	Primary Channel Length
		<u># / Km</u>	<u># / Km</u>
All Pools:	44	21.2	30.4
Pools >=1m deep:	4	1.9	2.8
Complex pools (LWD pieces>=3):	18	8.7	12.4
Pool frequency (channel widths/pool):	4.3		
Residual pool depth (avg):	0.50		

# Comment Summary

## Restoration Monitoring Sites 2006

MONITORING AREA: 1-NC      SITE ID: 337      ELLIOTT CREEK PRE-TX

UNIT#	TYPE	CHAN	DIST. (m)	COMMENTS	NOTE ESTIMATOR	NOTE NUMERATOR
1	RI	01	14.1		T=5C	START @ MOUTH OF DEVILS
3	RI	01	98.9	BV	OLD	BD
4	RB	02	98.9		BRAIDED CHANNELS @	MOUTH
8	SL	03	98.9		H = 0.4	
12	SL	04	98.9		H = 0.8	
17	RI	00	138.6		US-MT D30/C15	LT
18	SL	00	139	HS	H= 0.2	HS= 3 LOGS
19	DP	00	146.3		BLOWNOUT BD ON TOP OF	HS
20	SL	00	146.7		H = 0.35	
25	LP	01	194.5	HS	HS= 3 LOGS	
28	LP	01	236.8	HS	HS= 3 LOGS	
32	LP	00	280.4	HS	HS= 3 LOGS	
34	LP	01	314.3		SF	
36	LP	01	333.7		US-MT D30/S	LT
39	RB	01	392.7	TJ/		
40	CB	11	392.7		T= 5C	
41	LP	00	404.4	HS SS/	HS= 3 LOGS	
44	RI	00	500.3		CA-CT D30/S	LT
46	LP	00	529.6	HS	HS= 3 LOGS	
48	LP	00	553.1		SALMONID REDD	
50	LP	00	677.4	HS		

# Comment Summary

## Restoration Monitoring Sites 2006

MONITORING AREA: 1-NC      SITE ID: 337      ELLIOTT CREEK PRE-TX

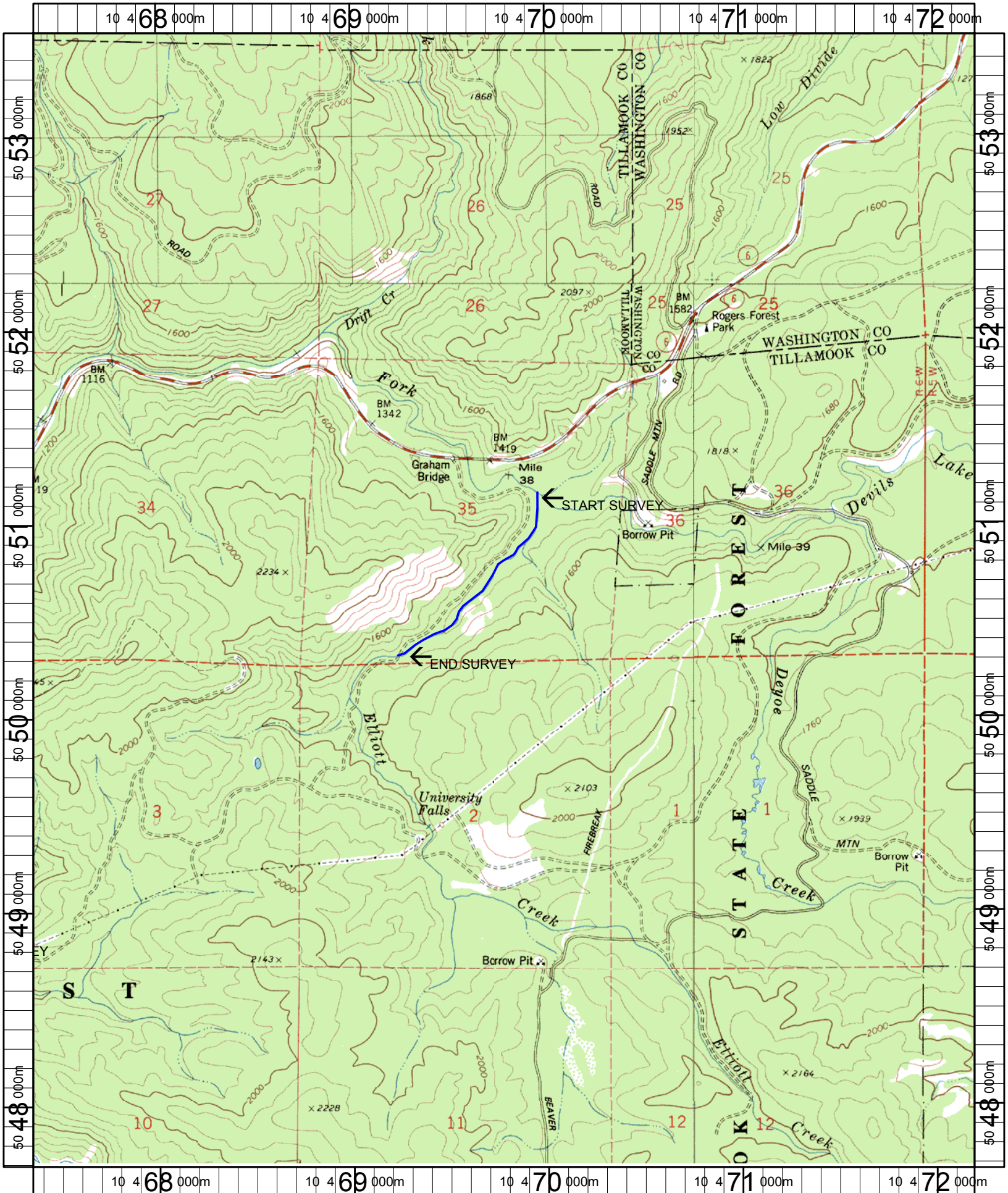
UNIT#	TYPE	CHAN	DIST. (m)	COMMENTS	NOTE ESTIMATOR	NOTE NUMERATOR
55	RI	02	735.4		0469720, 5050725	
59	LP	00	767	HS	HS= 3 LOGS	
60	RI	01	792.1	TJ/		
61	CB	11	792.1		3" OF SNOW	
62	LP	01	799.8	HS	HS = 2 LOGS	
65	LP	02	830.3		SF	
66	LP	00	840.4		US-MT D30/S LT/ST	
67	RB	01	862.4	TJ/		
72	LP	00	926.2	/SS		
76	LP	01	975		STW REDD	
77	RB	02	975	/SS		
81	LP	01	1056.3	HS	HS= 5 LOGS W/ UNIT 82	
85	RB	01	1123.6	LA/		
86	LP	01	1136.4	TJ/		
90	RI	02	1183.4	/SS		
91	DC	02	1183.4		FLOWING SUBSURFACE	
93	SL	01	1184.4	DJ	H= 1.0	
95	SL	01	1189.5		H= 0.3	
100	RB	03	1251.5		US-MT D30/S LT	
103	LP	00	1283.2		SF	
106	RB	00	1376.2	SS/		

# Comment Summary

## Restoration Monitoring Sites 2006

MONITORING AREA: 1-NC      SITE ID: 337      ELLIOTT CREEK PRE-TX

<u>UNIT#</u>	<u>TYPE</u>	<u>CHAN</u>	<u>DIST. (m)</u>	<u>COMMENTS</u>	<u>NOTE ESTIMATOR</u>	<u>NOTE NUMERATOR</u>
107	RB	01	1406.2	TJ/TJ	CA-CT D30/S LT	
112	RB	00	1446.9		CH-MV D30/S LT	



Name: WOODS POINT  
 Date: 1/19/2006  
 Scale: 1 inch equals 2000 feet

Location: 10 469781 E 5050607 N  
 Caption: ELLIOTT CREEK RESTORATION SITE - DEVILS LAKE FORK  
 WILSON BASIN