

**ODFW AQUATIC INVENTORY PROJECT**  
**OREGON PLAN FOR SALMON & WATERSHEDS**  
**STREAM RESTORATION HABITAT REPORT**

STREAM: South Fork Trask River Tributary A (N-319)  
BASIN: Trask River  
SURVEY TYPE: Post-Tx  
DATE: February 13, 2006  
SURVEY CREW: Brian Cannon, Jon Nott  
REPORT PREPARED BY: Paul Jacobsen  
BASIN AREA: 2.5 km<sup>3</sup>  
USGS MAPS: Blaine  
ECOREGION: Coast Range Volcanic

**GENERAL DESCRIPTION:**

The South Fork Trask River Tributary A habitat survey extended 526 meters. The channel was alternately constrained by hillslopes and terraces in a broad valley floor. The average valley width index was 4.3 (range: 2.0-8.0). Land use for the reach was large (30-50 cm dbh) trees timber harvest. The average unit gradient was 5.0 percent. Rapids (43%) and riffles (33%) dominated stream habitat. Gravel (43%) and cobble (36%) dominated stream substrate. Wood volume was very high at 71.3 m<sup>3</sup>/100m.

**COMMENTS:**

There were no potential barriers to upstream fish migration in the surveyed length.

The crew noted several habitat structures during the survey.

REACH 1      T02S-R08W-S35NE      REACH 1

**Valley and Channel Summary**

Valley Characteristics (Percent Reach Length)

<u>Narrow Valley Floor</u>		<u>Broad Valley Floor</u>	
Steep V-shape	0%	Constraining Terraces	100%
Moderate V-shape	0%	Multiple Terraces	0%
Open V-shape	0%	Wide Floodplain	0%
Valley Width Index	4.3	VWI Range:	2 - 8

Channel Morphology (Percent Reach Length)

<u>Constrained</u>		<u>Unconstrained</u>	
Hillslope	0%	Single Channel	0%
Bedrock	0%	Multiple Channel	0%
Terrace	0%	Braided Channel	0%
Alt. Terrace/Hill	100%		
Landuse	0%		

Channel Characteristics

<u>Type</u>	<u>Length (m)</u>	<u>Area (m2)</u>	<u>Dry Units</u>
Primary Channel	526	1,987	0
Secondary Channel	56	142	0
Off-Channel Units	14	27	0

Channel Dimensions (m)

<u>Wetted</u>	<u>Active</u>	<u>Floodprone</u> n = 5	<u>First Terrace</u> n = 3
Width: 3.7	Width: 4.7	9.5 ( 5.3 - 20.5 )	7.1 ( 6 - 8.9 )
Depth: 0.24	Height: 0.5	1.0 ( 0.9 - 1.2 )	1.3 ( 1.15 - 1.3 )

W:D ratio: 9.2      Entrenchment (ACW:FPW ratio): 2.0  
Stream Flow Type: MF      Habitat Units/100m (total channel length): 5.4  
Average Unit Gradient: 5.0%      Habitat Units/100m (primary channel length): 6.1  
Water temperature (°C): 9.0 - 9.0

**Riparian, Bank, and Wood Summary**

	<u>Primary</u>	<u>Secondary</u>
Land Use:	LT	TH
Riparian Vegetation:	D30	S

Bank Condition and Shade

<u>Bank Status</u>	<u>Percent Reach Length</u>	<u>Shade (% of 180)</u>
Actively Eroding:		Reach avg:
Undercut Banks:		Range: -

Large Wood Debris

	<u>Total</u>	<u>Total / 100m primary channel</u>
All pieces (>=3m x 0.15m):	261	49.6
Volume (m <sup>3</sup> ):	375	71.3
Key pieces (>=12m x 0.60m):	3	0.6

OREGON DEPT OF FISH AND WILDLIFE SOUTH FORK TRASK TRIB A POST-TX (1-NC, 319)

HABITAT INVENTORY

Report Date: 12/6/2006

Survey Date:

2/13/2006

REACH 1		T02S-R08W-S35NE					REACH 1					
HABITAT DETAIL												
Habitat Type	Number Units	Total Length (m)	Avg Width (m)	Avg Depth (m)	Total Area (m <sup>2</sup> )	Large Boulders (#>0.5m)	Substrate Percent Wetted Area					
							S/O	Snd	Grvl	Cbl	Bldr	Bdrk
CASCADE/BOULDERS	7	136	3.0	0.22	432	0	0	11	30	46	12	0
POOL-ALCOVE	1	3	2.7	0.40	8	0	70	0	0	30	0	0
POOL-BEAVER DAM	1	3	5.0	0.45	13	0	0	30	50	10	10	0
POOL-LATERAL SCOUR	1	11	4.3	0.60	45	0	0	40	40	10	10	0
POOL-PLUNGE	1	3	3.8	0.40	11	0	0	20	60	0	20	0
RAPID/BOULDERS	10	240	3.8	0.24	936	0	0	7	46	39	9	0
RIFFLE	7	200	3.5	0.22	704	0	0	5	55	37	3	0
STEP/LOG	4	2	4.4	0.08	8	0	0	0	40	34	26	0
<b>Total:</b>	<b>32</b>	<b>596</b>	<b>3.7</b>	<b>0.24</b>	<b>2,157</b>	<b>0</b>	<b>Avg: 2</b>	<b>9</b>	<b>43</b>	<b>36</b>	<b>11</b>	<b>0</b>

HABITAT SUMMARY									
Habitat Group	Number Units	Total Length (m)	Avg Width (m)	Avg Depth (m)	Wetted Area		Large Boulders		
					(m <sup>2</sup> )	Percent	Number	(# / 100m <sup>2</sup> )	
Dammed & BW Pools	2	6	3.9	0.43	21	0.98%	0	0.0	
Scour Pools	2	14	4.1	0.50	57	2.62%	0	0.0	
Glides	0	0			0	0.00%	0	0.0	
Riffles	7	200	3.5	0.22	704	32.62%	0	0.0	
Rapids	10	240	3.8	0.24	936	43.42%	0	0.0	
Cascades	7	136	3.0	0.22	432	20.01%	0	0.0	
Step/Falls	4	2	4.4	0.08	8	0.35%	0	0.0	
Dry	0	0			0	0.00%	0	0.0	
Culverts	0	0			0	0.00%	0	0.0	

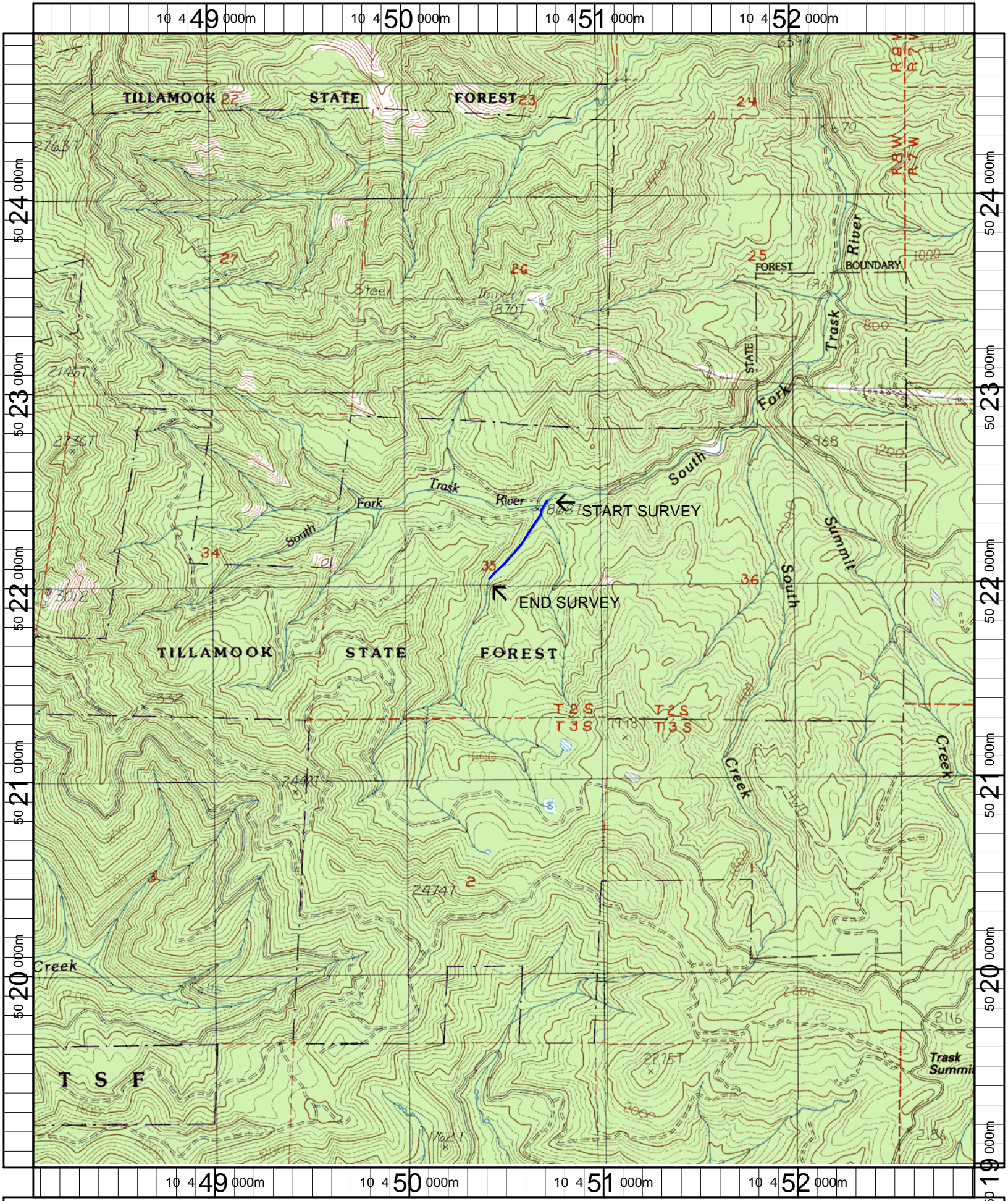
POOL SUMMARY			
	<u>Total</u>	Total of all Channel Lengths	Primary Channel Length
		<u># / Km</u>	<u># / Km</u>
All Pools:	4	6.7	7.6
Pools >=1m deep:	0	0.0	0.0
Complex pools (LWD pieces>=3):	0	0.0	0.0
Pool frequency (channel widths/pool):	32.0		
Residual pool depth (avg):	0.40		

# Comment Summary

## Restoration Monitoring Sites 2006

MONITORING AREA: 1-NC      SITE ID: 319      SOUTH FORK TRASK TRIB A POST-T

UNIT#	TYPE	CHAN	DIST. (m)	COMMENTS	NOTE ESTIMATOR	NOTE NUMERATOR
1	RB	00	25	HS	T = 9.0	
2	RB	00	46.5	HS		
3	RI	01	75.9	TJ		
8	SL	00	150.8		H = 0.6	
10	RB	00	201.3	HS		
11	RI	00	233.4	HS x 3		
13	RI	00	287.4	HS		
15	SL	00	323	HS	H = 0.4	
16	LP	00	333.5	SS/		
20	CB	00	437.5	LI/		
21	CB	01	462.5	SS/		
25	SL	02	508.5		H = 0.5	
27	AL	10	508.5		NO FLOW	
29	BP	02	508.5	BV		
30	SL	02	508.5		H = 0.6	



Name: BLAINE (OR)  
 Date: 2/15/2007  
 Scale: 1 inch equals 2000 feet

Location: 10 0450509 E 5021920 N  
 Caption: SF TRASK RIVER TRIBUTARY A RESTORATION SITE - TRASK BASIN