

ODFW AQUATIC INVENTORY PROJECT
OREGON PLAN FOR SALMON & WATERSHEDS
STREAM RESTORATION HABITAT REPORT

STREAM: Cruiser Creek Tributary (NC-273)
BASIN: Trask River
SURVEY TYPE: Pre-Tx
DATE: March 7, 2005
SURVEY CREW: Brian Bangs, Sheila Davis
REPORT PREPARED BY: Paul Jacobsen
BASIN AREA: 3.6 km²
USGS MAPS: Gobblers Knob
ECOREGION: Coast Range Volcanic

GENERAL DESCRIPTION:

The Cruiser Creek habitat survey extended 970 meters. The channel was constrained by hillslopes in a moderate V-shaped valley. The average valley width index was 2.6 (range: 1.1-5.0). Land use for the reach was large (30-50 cm dbh) and second growth (15-30 cm dbh) trees. The average unit gradient was 3.6 percent. Riffles (48%), rapids (26%) and scour pools (23%) dominated stream habitat. Gravel (30%), sand (20%) and bedrock (19%) dominated stream substrate. Wood volume was moderate at 26.4 m³/100m.

COMMENTS:

There was one potential barrier to upstream fish migration in the surveyed length. This was the metal culvert near the end of the survey which had a 2.5% slope and no substrate in the bottom of it.

REACH 1

T02S-R06W-S06SW

REACH 1

Valley and Channel Summary

Valley Characteristics (Percent Reach Length)

<u>Narrow Valley Floor</u>		<u>Broad Valley Floor</u>	
Steep V-shape	0%	Constraining Terraces	0%
Moderate V-shape	100%	Multiple Terraces	0%
Open V-shape	0%	Wide Floodplain	0%
Valley Width Index	2.6	VWI Range:	1.1 - 5

Channel Morphology (Percent Reach Length)

<u>Constrained</u>		<u>Unconstrained</u>	
Hillslope	100%	Single Channel	0%
Bedrock	0%	Multiple Channel	0%
Terrace	0%	Braided Channel	0%
Alt. Terrace/Hill	0%		
Landuse	0%		

Channel Characteristics

<u>Type</u>	<u>Length (m)</u>	<u>Area (m2)</u>	<u>Dry Units</u>
Primary Channel	970	3,192	0
Secondary Channel	36	83	1
Off-Channel Units	66	80	0

Channel Dimensions (m)

<u>Wetted</u>	<u>Active</u>	<u>Floodprone</u> n = 6	<u>First Terrace</u> n = 3
Width: 2.8	Width: 5.9	9.6 (4.9 - 14.7)	10.1 (5 - 14.7)
Depth: 0.25	Height: 0.3	0.6 (0.5 - 0.8)	0.9 (0.8 - 0.9)

W:D ratio: 18.4 Entrenchment (ACW:FPW ratio): 1.8
 Stream Flow Type: MF Habitat Units/100m (total channel length): 9.3
 Average Unit Gradient: 3.6% Habitat Units/100m (primary channel length): 10.3
 Water temperature (°C): 7.5 - 7.5

Riparian, Bank, and Wood Summary

	<u>Primary</u>	<u>Secondary</u>
Land Use:	LT	ST
Riparian Vegetation:	D30	D15

Bank Condition and Shade

<u>Bank Status</u>	<u>Percent Reach Length</u>	<u>Shade (% of 180)</u>
Actively Eroding:		Reach avg:
Undercut Banks:		Range: -

Large Wood Debris

	<u>Total</u>	<u>Total / 100m primary channel</u>
All pieces (>=3m x 0.15m):	281	29.0
Volume (m ³):	256	26.4
Key pieces (>=12m x 0.60m):	0	0.0

OREGON DEPT OF FISH AND WILDLIFE CRUISER CREEK TRIBUTARY PRE-TX (1-NC, 273)

HABITAT INVENTORY Report Date: 11/29/2005 Survey Date: 3/7/2005

REACH 1		T02S-R06W-S06SW					REACH 1					
HABITAT DETAIL												
Habitat Type	Number Units	Total Length (m)	Avg Width (m)	Avg Depth (m)	Total Area (m ²)	Large Boulders (#>0.5m)	Substrate Percent Wetted Area					
							S/O	Snd	Grvl	Cbl	Bldr	Bdrk
CASCADE/BEDROCK	1	12	2.9	0.10	36	0	5	15	20	10	10	40
CASCADE/BOULDERS	1	7	0.4	0.05	3	0	5	25	25	5	15	25
CULVERT CROSSING	1	22	0.8	0.10	17	0	2	10	30	5	3	50
DRY CHANNEL	1	22	2.1	0.00	47	0	5	10	55	30	0	0
POOL-BACKWATER	12	27	1.0	0.15	27	0	16	33	28	9	5	9
POOL-LATERAL SCOUR	23	192	3.3	0.52	672	0	10	25	33	16	7	10
POOL-PLUNGE	4	21	3.9	0.90	85	0	8	21	15	7	10	39
RAPID/BEDROCK	2	20	3.9	0.10	75	0	0	8	13	10	5	65
RAPID/BOULDERS	17	219	3.6	0.13	790	0	3	15	29	20	19	14
RIFFLE	31	500	3.0	0.13	1,530	0	4	17	36	21	10	12
RIFFLE W/ POCKETS	2	23	3.0	0.13	67	0	13	23	28	13	18	8
STEP/BEDROCK	4	4	1.3	0.10	6	0	0	0	0	0	4	96
STEP/STRUCTURE	1	0	0.7	0.10	0	0	0	0	0	0	0	100
Total:	100	1,072	2.8	0.25	3,355	0	Avg: 6	20	30	16	10	19

HABITAT SUMMARY									
Habitat Group	Number Units	Total Length (m)	Avg Width (m)	Avg Depth (m)	Wetted Area		Large Boulders		
					(m ²)	Percent	Number	(# / 100m ²)	
Dammed & BW Pools	12	27	1.0	0.15	27	0.81%	0	0.0	
Scour Pools	27	214	3.4	0.57	757	22.57%	0	0.0	
Glides	0	0			0	0.00%	0	0.0	
Riffles	33	523	3.0	0.13	1,597	47.60%	0	0.0	
Rapids	19	239	3.6	0.12	865	25.79%	0	0.0	
Cascades	2	20	1.7	0.08	39	1.16%	0	0.0	
Step/Falls	5	5	1.2	0.10	6	0.18%	0	0.0	
Dry	1	22	2.1	0.00	47	1.40%	0	0.0	
Culverts	1	22	0.8	0.10	17	0.49%	0	0.0	

POOL SUMMARY			
	Total	Total of all Channel Lengths # / Km	Primary Channel Length # / Km
All Pools:	39	36.4	40.2
Pools >=1m deep:	1	0.9	1.0
Complex pools (LWD pieces>=3):	9	8.4	9.3
Pool frequency (channel widths/pool):	4.6		
Residual pool depth (avg):	0.45		

Comment Summary

Restoration Monitoring Sites 2005

MONITORING AREA: **1-NC** SITE ID: **273** CRUISER CREEK TRIBUTARY PRE-T

UNIT#	TYPE	CHAN	DIST. (m)	COMMENTS	NOTE ESTIMATOR	NOTE NUMERATOR
1	RB	01	12.7	DJ	CH MV D30 F LT ST	
2	RP	02	12.7	DJ		
3	RB	00	25	LA, DJ		
6	RB	00	44.2	DJ		
7	RB	00	68.7	LA, DJ		
8	RB	01	76	DJ		
11	SR	00	84.5		H=1.5	
12	CR	00	96.9	DJ		
13	RI	00	105.4	DJ		
14	RB	01	133.5	DJ		
16	SR	00	134.7		H=1.1	
17	RB	01	146.3	DJ		
20	SR	00	150.75		H=0.6	
25	RI	00	201.95		CH MV C30 D15 LT ST	
26	RI	01	224.65		SMALL FISH	
28	RI	00	227.95	DJ		
29	LP	01	240.65	DJ		
32	RI	01	282.45	/SS		
34	RI	01	301.05	DJ		
41	LP	00	385.35	/SS DJ BV		
42	RB	01	400.35	DJ		

Comment Summary

Restoration Monitoring Sites 2005

MONITORING AREA: 1-NC SITE ID: 273 CRUISER CREEK TRIBUTARY PRE-T

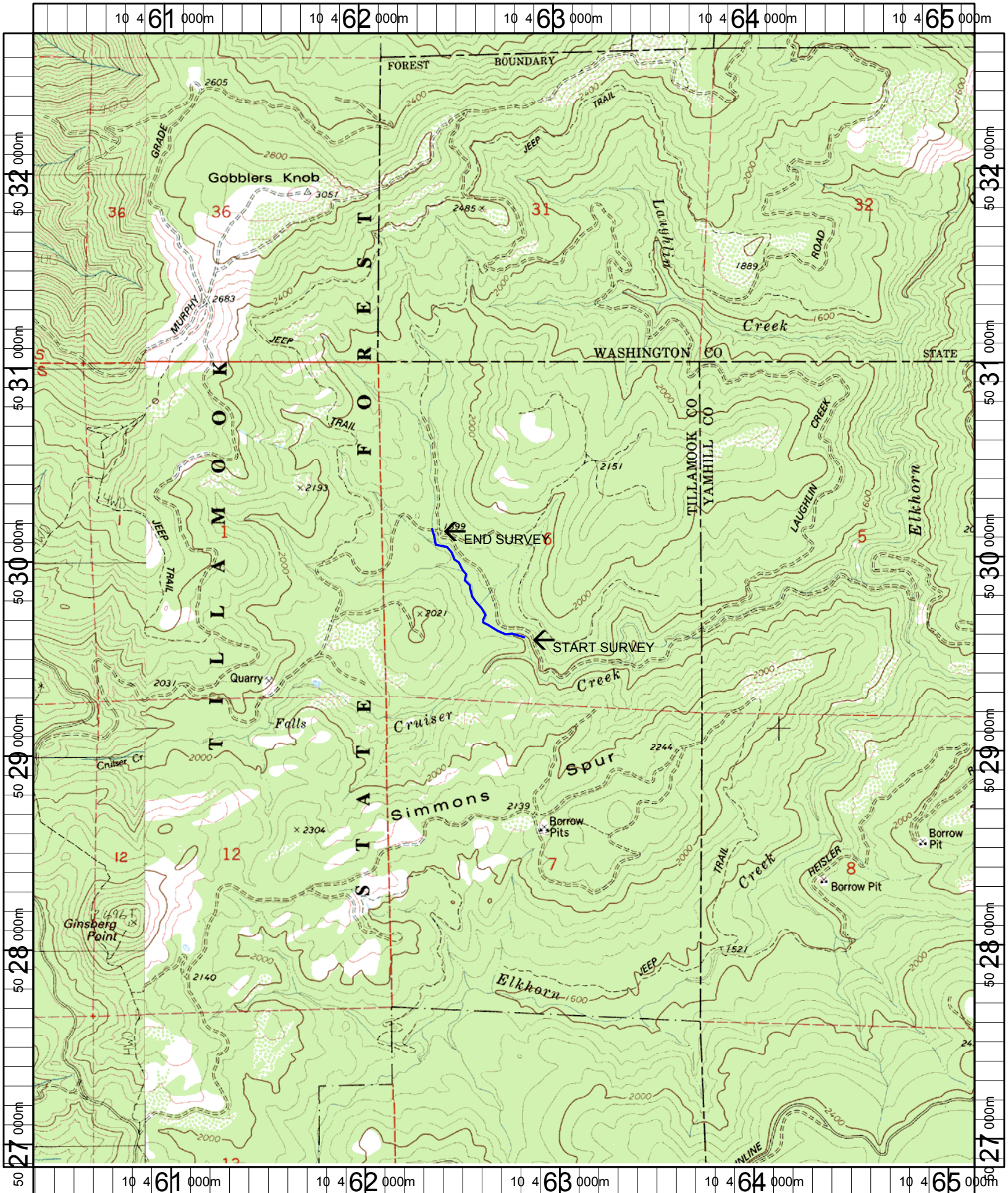
UNIT#	TYPE	CHAN	DIST. (m)	COMMENTS	NOTE ESTIMATOR	NOTE NUMERATOR
44	LP	00	414.25		CA MT G D3 LT ST	
45	RB	01	425.85	/TJ		
47	RI	01	449.75	WL	ELK	
49	RI	00	477.55	WL BV DJ	ELK	
52	LP	00	505.95	DJ		
54	LP	00	526.95	DJ		
57	PP	00	562.95	DJ, BV		
58	SR	00	563.75		H=0.45	
61	LP	10	574.35		TROUT FRY	
62	LP	00	582.65	DJ	TROUT FRY	
63	RI	01	605.35	/TJ		
64	CB	11	605.35		CA MT D30 F MT LT	
67	LP	01	651.65	DJ		
68	RI	11	651.65	DJ, TJ/		
69	RP	00	661.25	DJ		
72	RI	00	712.25	DJ		
74	RI	00	735.35	DJ	FRY	
75	LP	00	740.45	LA, DJ		
77	LP	00	752.85	DJ	FRY	
81	RB	00	801.95	DJ		
82	LP	00	807.15		FRY	

Comment Summary

Restoration Monitoring Sites 2005

MONITORING AREA: 1-NC SITE ID: 273 CRUISER CREEK TRIBUTARY PRE-T

UNIT#	TYPE	CHAN	DIST. (m)	COMMENTS	NOTE ESTIMATOR	NOTE NUMERATOR
83	LP	00	812.85	DJ		
84	RB	00	823.65		CH MV D50 D15 MT ST	
85	LP	00	831.75		FRY	
86	RR	00	843.45	DJ		
89	RB	01	878.45	TJ/		
92	LP	00	882.75	DJ	FRY	
93	RI	01	897.65	DJ		
98	SS	00	920.15	CC	H=0.75	
99	CC	00	942.15	PA, CC	METAL, NO SUBSTRATE INSIDE	
100	RI	00	970.05		CT MT D30 D15 LT ST	



Name: GOBBLERS KNOB
 Date: 1/6/2005
 Scale: 1 inch equals 2000 feet

Location: 10 462729 E 5029789 N
 Caption: CRUISER CREEK TRIBUTARY RESTORATION SITE - TRASK BASIN