

ODFW AQUATIC INVENTORY PROJECT
OREGON PLAN FOR SALMON & WATERSHEDS
STREAM RESTORATION HABITAT REPORT

STREAM: Cruiser Creek (N-272)
BASIN: Trask River
SURVEY TYPE: Post-Tx
DATE: February 28, 2006
SURVEY CREW: Brian Cannon, Jon Nott
REPORT PREPARED BY: Paul Jacobsen
BASIN AREA: 8.9 km²
USGS MAPS: Gobblers Knob
ECOREGION: Coast Range Volcanic

GENERAL DESCRIPTION:

The Cruiser Creek habitat survey extended 1,663 meters. The channel was constrained by hillslopes in a steep V-shaped valley. The average valley width index was 1.7 (range: 1.3-2.6). Land use for the reach was second growth (15-30 cm dbh) and large (30-50 cm dbh) trees. The average unit gradient was 3.9 percent. Rapids (49%) dominated stream habitat. Cobble (32%), gravel (23%) and boulders (22%) dominated stream substrate. Wood volume was very high at 52.9 m³/100m.

COMMENTS:

There were no potential barriers to upstream fish migration in the surveyed length.

The crew noted several habitat structures during the survey.

REACH 1

T02S-R06W-S05SE

REACH 1

Valley and Channel Summary

Valley Characteristics (Percent Reach Length)

<u>Narrow Valley Floor</u>		<u>Broad Valley Floor</u>	
Steep V-shape	100%	Constraining Terraces	0%
Moderate V-shape	0%	Multiple Terraces	0%
Open V-shape	0%	Wide Floodplain	0%
Valley Width Index	1.7	VWI Range:	1.3 - 2.6

Channel Morphology (Percent Reach Length)

<u>Constrained</u>		<u>Unconstrained</u>	
Hillslope	100%	Single Channel	0%
Bedrock	0%	Multiple Channel	0%
Terrace	0%	Braided Channel	0%
Alt. Terrace/Hill	0%		
Landuse	0%		

Channel Characteristics

<u>Type</u>	<u>Length (m)</u>	<u>Area (m2)</u>	<u>Dry Units</u>
Primary Channel	1,663	11,191	0
Secondary Channel	83	315	0
Off-Channel Units	63	87	0

Channel Dimensions (m)

<u>Wetted</u>	<u>Active</u>	<u>Floodprone</u> n = 7	<u>First Terrace</u> n = 1
Width: 6.1	Width: 11.1	18.7 (10 - 31)	10.5 (10.5 - 10.5)
Depth: 0.44	Height: 0.8	1.6 (1.3 - 2.3)	1.1 (1.1 - 1.1)

W:D ratio: 14.4 Entrenchment (ACW:FPW ratio): 1.7
 Stream Flow Type: MF Habitat Units/100m (total channel length): 4.5
 Average Unit Gradient: 3.9% Habitat Units/100m (primary channel length): 4.9
 Water temperature (°C): 6.0 - 6.0

Riparian, Bank, and Wood Summary

	<u>Primary</u>	<u>Secondary</u>
Land Use:	ST	LT
Riparian Vegetation:	D30	D15

Bank Condition and Shade

<u>Bank Status</u>	<u>Percent Reach Length</u>	<u>Shade (% of 180)</u>
Actively Eroding:		Reach avg:
Undercut Banks:		Range: -

Large Wood Debris

	<u>Total</u>	<u>Total / 100m primary channel</u>
All pieces (>=3m x 0.15m):	519	31.2
Volume (m ³):	879	52.9
Key pieces (>=12m x 0.60m):	28	1.7

OREGON DEPT OF FISH AND WILDLIFE

CRUISER CREEK POST-TX (1-NC, 272)

HABITAT INVENTORY

Report Date: 12/6/2006

Survey Date:

2/28/2006

REACH 1		T02S-R06W-S05SE					REACH 1					
HABITAT DETAIL												
Habitat Type	Number Units	Total Length (m)	Avg Width (m)	Avg Depth (m)	Total Area (m ²)	Large Boulders (#>0.5m)	Substrate Percent Wetted Area					
							S/O	Snd	Grvl	Cbl	Bldr	Bdrk
CASCADE/BOULDERS	18	392	4.5	0.25	2,083	0	1	10	17	28	39	6
POOL-BACKWATER	2	12	4.4	0.90	52	0	43	45	13	0	0	0
POOL-DAMMED	3	36	8.8	0.87	333	0	3	46	36	12	2	0
POOL-ISOLATED	1	3	1.4	0.15	4	0	20	50	10	10	10	0
POOL-LATERAL SCOUR	14	179	5.5	0.87	979	0	2	23	29	33	13	2
POOL-PLUNGE	2	15	8.3	1.15	110	0	0	40	32	25	3	0
RAPID/BOULDERS	22	856	6.5	0.31	5,684	0	0	10	21	44	24	1
RIFFLE	11	287	7.3	0.30	2,152	0	6	34	32	20	7	1
STEP/BOULDERS	1	6	6.5	0.25	39	0	0	0	5	29	67	0
STEP/COBBLE	1	9	6.0	0.40	54	0	0	36	27	27	9	0
STEP/LOG	7	14	7.7	0.25	103	0	0	13	14	44	29	0
Total:	82	1,809	6.1	0.44	11,593	0	Avg: 3	19	23	32	22	2

HABITAT SUMMARY									
Habitat Group	Number Units	Total Length (m)	Avg Width (m)	Avg Depth (m)	Wetted Area		Large Boulders		
					(m ²)	Percent	Number	(# / 100m ²)	
Dammed & BW Pools	6	51	6.1	0.76	389	3.36%	0	0.0	
Scour Pools	16	194	5.8	0.90	1,089	9.39%	0	0.0	
Glides	0	0			0	0.00%	0	0.0	
Riffles	11	287	7.3	0.30	2,152	18.56%	0	0.0	
Rapids	22	856	6.5	0.31	5,684	49.03%	0	0.0	
Cascades	18	392	4.5	0.25	2,083	17.97%	0	0.0	
Step/Falls	9	29	7.4	0.27	196	1.69%	0	0.0	
Dry	0	0			0	0.00%	0	0.0	
Culverts	0	0			0	0.00%	0	0.0	

POOL SUMMARY			
	<u>Total</u>	Total of all Channel Lengths	Primary Channel Length
		<u># / Km</u>	<u># / Km</u>
All Pools:	22	12.2	13.2
Pools >=1m deep:	7	3.9	4.2
Complex pools (LWD pieces>=3):	10	5.5	6.0
Pool frequency (channel widths/pool):	7.4		
Residual pool depth (avg):	0.62		

Comment Summary

Restoration Monitoring Sites 2006

MONITORING AREA: 1-NC SITE ID: 272 CRUISER CREEK (POST-TX)

UNIT#	TYPE	CHAN	DIST. (m)	COMMENTS	NOTE ESTIMATOR	NOTE NUMERATOR
1	LP	00	13.4			1ST UNIT IN ELKHORN AC.
2	CB	00	48.5	HS		4-LOGS
3	LP	00	60.6	HS		3-LOGS = SEVERAL BOULDERS
4	CB	00	83.1	HS		2 LOGS, CH,SV, D30, G, ST
7	RB	00	187.6	HS, HS		9 LOGS, ~ 12 BOULDERS
8	LP	00	198.8	HS		3 LOGS
9	CB	00	217.8	HS		4 LOGS = 2 BOULDERS
10	RB	01	267.8	HS		CH,SV,D30,G,ST,LT
12	SL	02	267.8	HS		H= 0.7M
13	RB	00	315.9	HS		1 LOG
14	RB	00	365.9	HS,HS, SS/		5 LOGS+2 BLDRS, 2 LOGS+-20 BLD
15	CB	00	407.5	HS		4 LOGS
16	RI	00	428.7	HS		3 LOGS + 12-15 BLDRS
17	CB	00	464	HS		5 LOGS + ~12 BOULDERS
20	RI	00	522.5	HS		HS= 8 LOGS, CHSV,D30,C30,ST
23	CB	01	568.8	/TJ		
24	CB	11	568.8			ACW= 1.5M
25	RB	00	618.8	HS		11 LOGS
26	RB	00	643.8	HS,HS		2 LOGS, 4 LOGS
28	RI	00	680.8	HS,HS,SS/		2 LOGS, 1 LOG.
29	RB	00	719.9	HS		1 LOG

Comment Summary

Restoration Monitoring Sites 2006

MONITORING AREA: 1-NC SITE ID: 272 CRUISER CREEK (POST-TX)

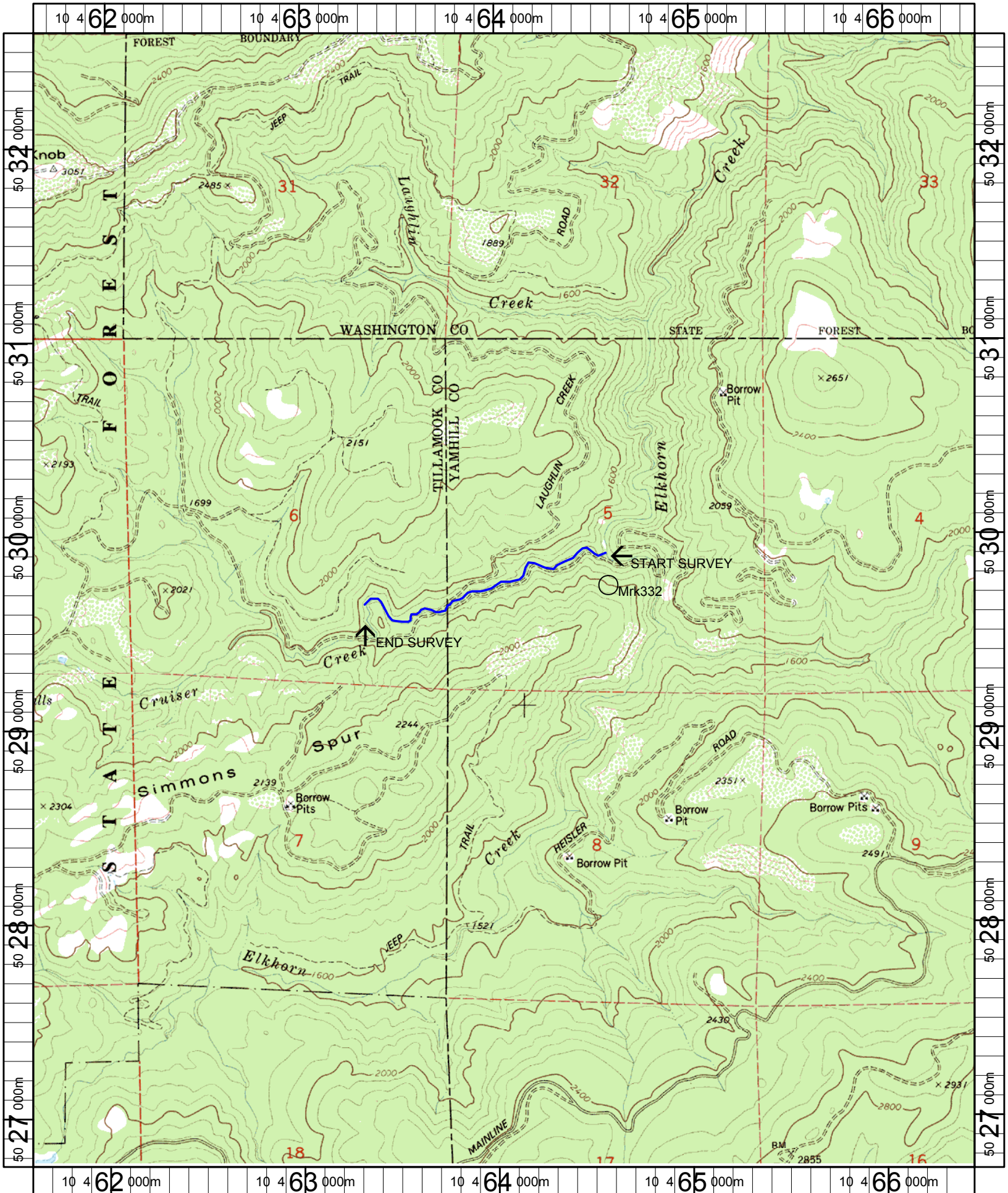
UNIT#	TYPE	CHAN	DIST. (m)	COMMENTS	NOTE ESTIMATOR	NOTE NUMERATOR
30	LP	00	737.1	HS	5 LOGS	
31	RB	01	787.1	HS,TJ/	1 LOG	
32	CB	11	787.1		ACW = 0.8	
33	RB	01	837.1		CH,SV,D15,D30,ST,LT	
36	SL	00	859.4	DJ	H= 1.0M	
39	RB	00	908.1	HS	2 LOGS	
40	LP	01	921.6	HS, TJ/	1 LOG	
41	CB	11	921.6		ACW = 1.2M	
43	SL	00	966.6	HS	3 LOGS, H= 0.8M	
45	RB	00	1006.7	HS	1 LOG	
46	PP	00	1017.5	HS	2 LOGS	
47	SL	00	1018.2		H= 0.7, REMAINS OF OLD LOG BC	
51	RB	00	1112.4	SS/		
52	SL	00	1113		H= 0.4M	
53	RI	01	1137.3	BC		
58	RB	00	1157.3	/SS		
60	RB	00	1221.3		CH,SV,D15,D30,ST.,End of spawn	
61	RI	01	1236.3	HS	8 LOGS	
62	PP	01	1240.3		Gravel bar splits this channel	
63	SL	01	1240.6		H=0.3M, GRAVEL BAR SPLITS CHAN	
64	DP	01	1248.1	HS	2 LOGS	

Comment Summary

Restoration Monitoring Sites 2006

MONITORING AREA: 1-NC SITE ID: 272 CRUISER CREEK (POST-TX)

UNIT#	TYPE	CHAN	DIST. (m)	COMMENTS	NOTE ESTIMATOR	NOTE NUMERATOR
66	DP	01	1265.3	HS	2 LOGS	
67	RI	01	1296.7	HS	7 LOGS + 7 BOULDERS	
69	LP	02	1296.7	HS	2LOGS = 2 BOULDERS	
70	RI	01	1328.1		COHO JAWS AND REMAINS THROUGH	
71	IP	10	1328.1	HS	12 LOGS	
72	RI	01	1378.1	HS, HS, TJ	2 LOGS, 9 LOGS + 8 BLDRS	
73	CB	11	1378.1		ACW = 1.8M, T= 6	
78	CB	01	1593.7	/TJ		
79	CB	11	1593.7		ACW = 1.2M	
82	CB	00	1663.1	/SS	CH,SV,M15,D30,ST	



Name: GOBBLERS KNOB
 Date: 1/6/2005
 Scale: 1 inch equals 2000 feet

Location: 10 464037 E 5029663 N
 Caption: CRUISER CREEK RESTORATION SITE - TRASK BASIN