

**ODFW AQUATIC INVENTORY PROJECT**  
**OREGON PLAN FOR SALMON & WATERSHEDS**  
**STREAM RESTORATION HABITAT REPORT**

STREAM: Cruiser Creek (NC-272)  
BASIN: Trask River  
SURVEY TYPE: Pre-Tx  
DATE: March 8, 2005  
SURVEY CREW: Brain Bangs, Sheila Davis  
REPORT PREPARED BY: Paul Jacobsen  
BASIN AREA: 8.9 km<sup>2</sup>  
USGS MAPS: Gobblers Knob  
ECOREGION: Coast Range Volcanic

**GENERAL DESCRIPTION:**

The Cruiser Creek habitat survey extended 1,655 meters. The channel was constrained by hillslopes in a moderate V-shaped valley. The average valley width index was 1.6 (range: 1.0-2.3). Land use for the reach was second growth (15-30 cm dbh) and large (30-50 cm dbh) trees. The average unit gradient was 3.4 percent. Rapids (45%) and riffles (37%) dominated stream habitat. Gravel (29%), boulders (28%) and cobble (24%) dominated stream substrate. Wood volume was moderate at 21.2 m<sup>3</sup>/100m.

**COMMENTS:**

There were no potential barriers to upstream fish migration in the surveyed length.

The crew noted one habitat structure during the survey.

REACH 1

T02S-R06W-S05SW

REACH 1

**Valley and Channel Summary**

Valley Characteristics (Percent Reach Length)

<u>Narrow Valley Floor</u>		<u>Broad Valley Floor</u>	
Steep V-shape	0%	Constraining Terraces	0%
Moderate V-shape	100%	Multiple Terraces	0%
Open V-shape	0%	Wide Floodplain	0%
Valley Width Index	1.6	VWI Range:	1 - 2.3

Channel Morphology (Percent Reach Length)

<u>Constrained</u>		<u>Unconstrained</u>	
Hillslope	100%	Single Channel	0%
Bedrock	0%	Multiple Channel	0%
Terrace	0%	Braided Channel	0%
Alt. Terrace/Hill	0%		
Landuse	0%		

Channel Characteristics

<u>Type</u>	<u>Length (m)</u>	<u>Area (m2)</u>	<u>Dry Units</u>
Primary Channel	1,655	7,714	0
Secondary Channel	165	571	0
Off-Channel Units	94	150	0

Channel Dimensions (m)

<u>Wetted</u>	<u>Active</u>	<u>Floodprone</u> n = 7	<u>First Terrace</u> n = 1
Width: 4.0	Width: 7.9	11.6 ( 7.4 - 19.9 )	15.0 ( 15 - 15 )
Depth: 0.29	Height: 0.5	1.0 ( 0.8 - 1.2 )	1.2 ( 1.15 - 1.15 )

W:D ratio: 16.5  
 Stream Flow Type: LF  
 Average Unit Gradient: 3.4%  
 Water temperature (°C): 6.0 - 6.0

Entrenchment (ACW:FPW ratio): 1.5  
 Habitat Units/100m (total channel length): 8.5  
 Habitat Units/100m (primary channel length): 9.8

**Riparian, Bank, and Wood Summary**

	<u>Primary</u>	<u>Secondary</u>
Land Use:	ST	LT
Riparian Vegetation:	D30	D15

Bank Condition and Shade

<u>Bank Status</u>	<u>Percent Reach Length</u>	<u>Shade (% of 180)</u>
Actively Eroding:		Reach avg:
Undercut Banks:		Range: -

Large Wood Debris

	<u>Total</u>	<u>Total / 100m primary channel</u>
All pieces (>=3m x 0.15m):	385	23.3
Volume (m <sup>3</sup> ):	351	21.2
Key pieces (>=12m x 0.60m):	0	0.0

OREGON DEPT OF FISH AND WILDLIFE

CRUISER CREEK PRE-TX (1-NC, 272)

HABITAT INVENTORY

Report Date: 11/29/2005

Survey Date:

3/8/2005

REACH 1		T02S-R06W-S05SW					REACH 1					
HABITAT DETAIL												
Habitat Type	Number Units	Total Length (m)	Avg Width (m)	Avg Depth (m)	Total Area (m <sup>2</sup> )	Large Boulders (#>0.5m)	Substrate Percent Wetted Area					
							S/O	Snd	Grvl	Cbl	Bldr	Bdrk
CASCADE/BEDROCK	2	17	1.3	0.10	24	0	5	0	0	0	0	95
CASCADE/BOULDERS	2	25	3.4	0.23	66	0	10	5	20	30	35	0
POOL-BACKWATER	14	48	1.6	0.18	77	0	12	16	36	13	23	0
POOL-LATERAL SCOUR	28	294	4.5	0.71	1,340	0	8	15	31	22	21	2
RAPID/BEDROCK	1	16	3.8	0.20	61	0	0	5	0	15	20	60
RAPID/BOULDERS	55	779	4.7	0.21	3,704	0	1	7	26	28	37	1
RIFFLE	53	729	3.9	0.22	3,153	0	4	11	32	26	26	1
STEP/LOG	6	4	2.5	0.10	9	0	7	23	20	25	25	0
STEP/STRUCTURE	1	1	0.3	0.05	0	0	0	0	30	60	10	0
<b>Total:</b>	162	1,913	4.0	0.29	8,435	0	<b>Avg:</b> 5	11	29	24	28	3

HABITAT SUMMARY									
Habitat Group	Number Units	Total Length (m)	Avg Width (m)	Avg Depth (m)	Wetted Area		Large Boulders		
					(m <sup>2</sup> )	Percent	Number	(# / 100m <sup>2</sup> )	
Dammed & BW Pools	14	48	1.6	0.18	77	0.91%	0	0.0	
Scour Pools	28	294	4.5	0.71	1,340	15.89%	0	0.0	
Glides	0	0			0	0.00%	0	0.0	
Riffles	53	729	3.9	0.22	3,153	37.38%	0	0.0	
Rapids	56	796	4.7	0.21	3,765	44.64%	0	0.0	
Cascades	4	41	2.3	0.16	90	1.06%	0	0.0	
Step/Falls	7	5	2.2	0.09	10	0.12%	0	0.0	
Dry	0	0			0	0.00%	0	0.0	
Culverts	0	0			0	0.00%	0	0.0	

POOL SUMMARY			
	Total of all Channel Lengths		Primary Channel Length
	<u>Total</u>	<u># / Km</u>	<u># / Km</u>
All Pools:	42	22.0	25.4
Pools >=1m deep:	1	0.5	0.6
Complex pools (LWD pieces>=3):	13	6.8	7.9
Pool frequency (channel widths/pool):	5.8		
Residual pool depth (avg):	0.50		

# Comment Summary

## Restoration Monitoring Sites 2005

MONITORING AREA: 1-NC      SITE ID: 272      CRUISER CREEK PRE-TX

UNIT#	TYPE	CHAN	DIST. (m)	COMMENTS	NOTE ESTIMATOR	NOTE NUMERATOR
3	LP	00	34	DJ		
4	RB	00	38.6	DJ		
5	RI	00	48.6	DJ		
6	RB	00	55	DJ		
12	RI	00	119.5	DJ		
19	SL	00	216.7		H = .35	
23	LP	01	247.8	DJ		
24	RI	01	269.9	DJ		
25	SL	01	270.9	DJ	H = .9	
26	RI	01	281.4	DJ		
28	SL	02	288.1		H = .25	
29	RI	02	288.1	DJ		
30	RB	02	288.1	DJ		
31	RI	02	288.1	DJ		
32	RI	03	288.1	DJ		
38	RI	00	333.7	DJ		
49	RI	00	469.1	DJ		
52	RB	00	535.7	DJ		
53	LP	00	551.4	DJ		
54	RB	01	562	/TJ		
55	CB	11	562	DJ		

# Comment Summary

## Restoration Monitoring Sites 2005

MONITORING AREA: **1-NC**      SITE ID: **272**      CRUISER CREEK PRE-TX

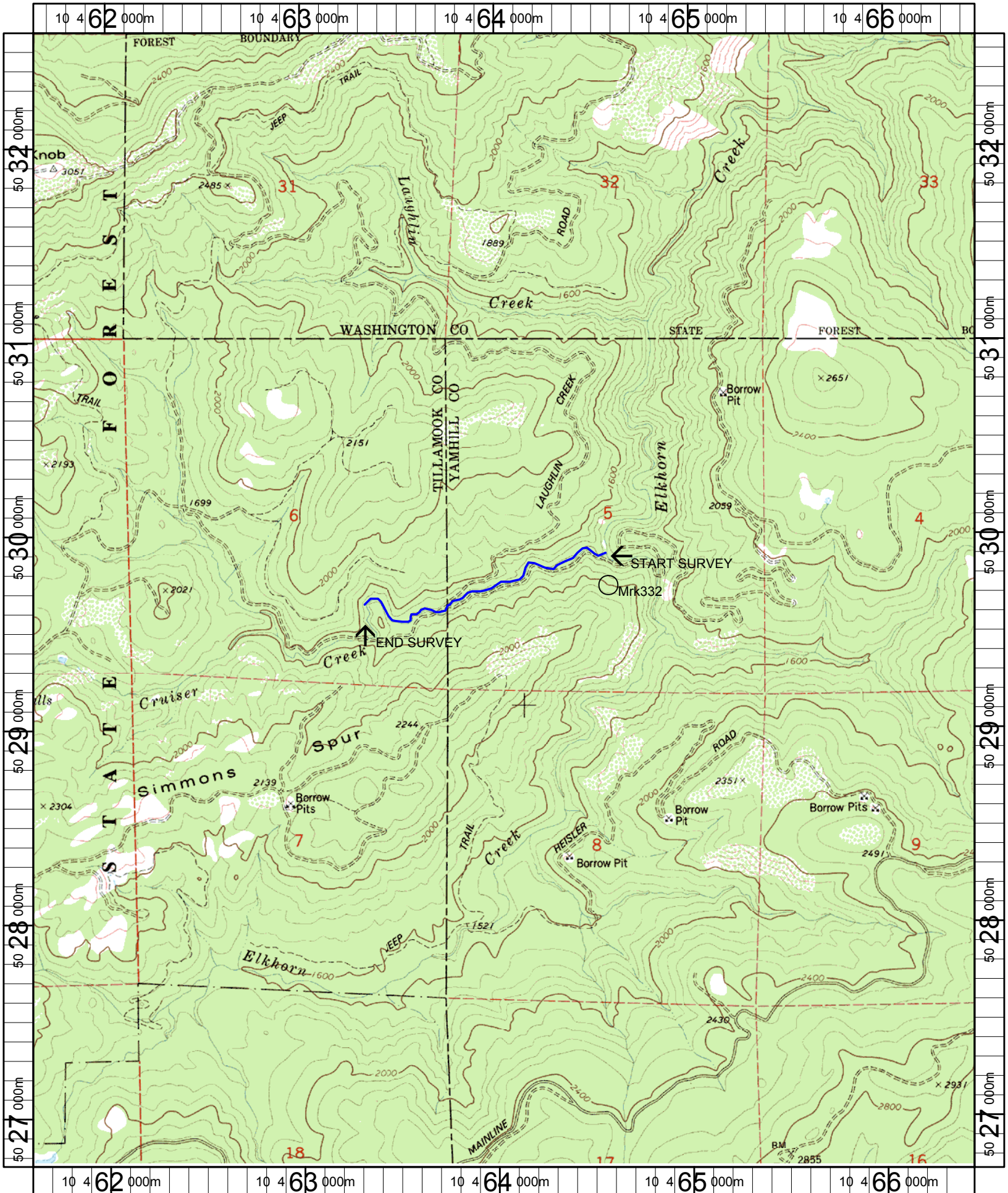
UNIT#	TYPE	CHAN	DIST. (m)	COMMENTS	NOTE ESTIMATOR	NOTE NUMERATOR
60	RB	00	647	DJ		
61	RI	00	676.3	CE/, DJ	CE = DRY	
63	RI	00	715.6	BV, DJ		
64	LP	00	729.1	DJ		
66	RI	00	766.8	CE/	CE = DRY	
67	RB	00	789.9	SS/		
68	RI	00	811.4	BV		
71	RB	00	845.3	DJ		
72	LP	00	857.6	DJ	LOG WITH METAL RODS	
73	SL	00	858.5		H = .6	
75	LP	00	876.1	DJ		
78	RI	01	917.3	TJ/		
80	SS	11	917.3	CC	H = 1.65, .5W x .4H	
82	RB	00	956.9		CABLE IN STREAM	
86	RB	00	1002.1		CABLE IN STREAM	
87	LP	01	1010.6	DJ, HS	CABLED LOGS, LOGS W/ METAL ROD	
90	RI	00	1025.2	DJ		
97	RB	00	1097	SS/, DJ	CABLE IN STREAM	
99	SL	00	1110.1	/CS/, BC	H = .4	
103	LP	01	1140.8	DJ		
104	RI	01	1145		FISH SKELETON	

# Comment Summary

## Restoration Monitoring Sites 2005

MONITORING AREA: **1-NC**      SITE ID: **272**      CRUISER CREEK PRE-TX

UNIT#	TYPE	CHAN	DIST. (m)	COMMENTS	NOTE ESTIMATOR	NOTE NUMERATOR
105	LP	01	1155.9		FRY	
106	LP	02	1155.9		LOTS OF FRY	
110	LP	03	1155.9	DJ		
111	RI	03	1155.9		FISH SKELETON	
113	LP	00	1178.5		FRY	
114	RB	01	1192.6		FRY	
117	RI	01	1217.9	DJ		
121	RI	02	1229.8		SPAWNING SIGN	
123	LP	01	1244.7	DJ		
124	LP	01	1250.8	DJ, BV		
128	LP	00	1278	DJ	FRY	
129	RB	00	1284.8		FISH SKELETON	
132	LP	00	1315.5	DJ	FRY	
133	RI	01	1336.8	TJ/		
136	RB	00	1353.3	DJ		
139	RB	00	1389.5	DJ		
140	RB	00	1404.5		SPAWNING SURVEY SIGN	
153	RB	00	1566.1	DJ		
154	RI	01	1574.5	TJ		
159	SL	00	1617.9	DJ	H = .45	



Name: GOBBLERS KNOB  
 Date: 1/6/2005  
 Scale: 1 inch equals 2000 feet

Location: 10 464037 E 5029663 N  
 Caption: CRUISER CREEK RESTORATION SITE - TRASK BASIN