

ODFW AQUATIC INVENTORY PROJECT
OREGON PLAN FOR SALMON & WATERSHEDS
STREAM RESTORATION HABITAT REPORT

STREAM: Steampot Creek (N-238)
BASIN: Trask River
SURVEY TYPE: Reference
DATE: February 14, 2006
SURVEY CREW: Brian Cannon, Jon Nott
REPORT PREPARED BY: Paul Jacobsen
BASIN AREA: 6.2 km³
USGS MAPS: Trask
ECOREGION: Coast Range Volcanic

GENERAL DESCRIPTION:

The Steampot Creek habitat survey extended 438 meters. The channel was constrained by hillslopes in a steep V-shaped valley. The average valley width index was 2.2 (range: 1.4-3.0). Land use for the reach was large (30-50 cm dbh) and second growth (15-30 cm dbh) trees. The average unit gradient was 3.6 percent. Riffles (36%), scour pools (30%) and rapids (27%) dominated stream habitat. Gravel (37%) and cobble (33%) dominated stream substrate. Wood volume was very high at 64.5 m³/100m.

COMMENTS:

There were no potential barriers to upstream fish migration in the surveyed length.

REACH 1

T02S-R07W-S21SW

REACH 1

Valley and Channel Summary

Valley Characteristics (Percent Reach Length)

<u>Narrow Valley Floor</u>		<u>Broad Valley Floor</u>	
Steep V-shape	100%	Constraining Terraces	0%
Moderate V-shape	0%	Multiple Terraces	0%
Open V-shape	0%	Wide Floodplain	0%
Valley Width Index	2.2	VWI Range:	1.4 - 3

Channel Morphology (Percent Reach Length)

<u>Constrained</u>		<u>Unconstrained</u>	
Hillslope	100%	Single Channel	0%
Bedrock	0%	Multiple Channel	0%
Terrace	0%	Braided Channel	0%
Alt. Terrace/Hill	0%		
Landuse	0%		

Channel Characteristics

<u>Type</u>	<u>Length (m)</u>	<u>Area (m2)</u>	<u>Dry Units</u>
Primary Channel	438	1,836	0
Secondary Channel	72	136	0
Off-Channel Units	18	21	0

Channel Dimensions (m)

<u>Wetted</u>	<u>Active</u>	<u>Floodprone</u> n = 5	<u>First Terrace</u> n = 0
Width: 3.7	Width: 7.5	15.6 (12.6 - 19)	(-)
Depth: 0.42	Height: 0.6	1.2 (1 - 1.2)	(-)

W:D ratio: 13.0
 Entrenchment (ACW:FPW ratio): 2.2
 Stream Flow Type: MF
 Habitat Units/100m (total channel length): 8.9
 Average Unit Gradient: 3.6%
 Habitat Units/100m (primary channel length): 10.7
 Water temperature (°C): 6.0 - 6.0

Riparian, Bank, and Wood Summary

	<u>Primary</u>	<u>Secondary</u>
Land Use:	LT	ST
Riparian Vegetation:	D30	S

Bank Condition and Shade

<u>Bank Status</u>	<u>Percent Reach Length</u>	<u>Shade (% of 180)</u>
Actively Eroding:		Reach avg:
Undercut Banks:		Range: -

Large Wood Debris

	<u>Total</u>	<u>Total / 100m primary channel</u>
All pieces (>=3m x 0.15m):	147	33.5
Volume (m ³):	283	64.5
Key pieces (>=12m x 0.60m):	1	0.2

OREGON DEPT OF FISH AND WILDLIFE

STEAMPOT CREEK REFERENCE (1-NC, 238)

HABITAT INVENTORY

Report Date: 12/6/2006

Survey Date:

2/14/2006

REACH 1		T02S-R07W-S21SW					REACH 1					
HABITAT DETAIL												
Habitat Type	Number Units	Total Length (m)	Avg Width (m)	Avg Depth (m)	Total Area (m ²)	Large Boulders (#>0.5m)	Substrate Percent Wetted Area					
							S/O	Snd	Grvl	Cbl	Bldr	Bdrk
CASCADE/BOULDERS	1	8	0.8	0.10	6	0	0	10	30	60	0	0
POOL-ISOLATED	1	2	2.4	0.40	5	0	0	35	60	0	5	0
POOL-LATERAL SCOUR	6	75	4.5	0.88	331	0	1	17	42	26	3	11
POOL-PLUNGE	8	60	4.0	0.96	266	0	0	17	50	27	4	2
RAPID/BOULDERS	8	134	3.9	0.23	534	0	0	9	26	49	9	7
RIFFLE	11	208	3.4	0.22	717	0	0	13	46	35	3	3
STEP/BEDROCK	4	27	3.3	0.18	80	0	0	0	0	0	3	98
STEP/LOG	8	13	3.8	0.17	53	0	0	16	38	43	3	1
Total:	47	529	3.7	0.42	1,993	0	Avg: 0	13	37	33	4	12

HABITAT SUMMARY									
Habitat Group	Number Units	Total Length (m)	Avg Width (m)	Avg Depth (m)	Wetted Area		Large Boulders		
					(m ²)	Percent	Number	(# / 100m ²)	
Dammed & BW Pools	1	2	2.4	0.40	5	0.26%	0	0.0	
Scour Pools	14	135	4.2	0.93	597	29.96%	0	0.0	
Glides	0	0			0	0.00%	0	0.0	
Riffles	11	208	3.4	0.22	717	35.99%	0	0.0	
Rapids	8	134	3.9	0.23	534	26.77%	0	0.0	
Cascades	1	8	0.8	0.10	6	0.33%	0	0.0	
Step/Falls	12	41	3.6	0.17	133	6.69%	0	0.0	
Dry	0	0			0	0.00%	0	0.0	
Culverts	0	0			0	0.00%	0	0.0	

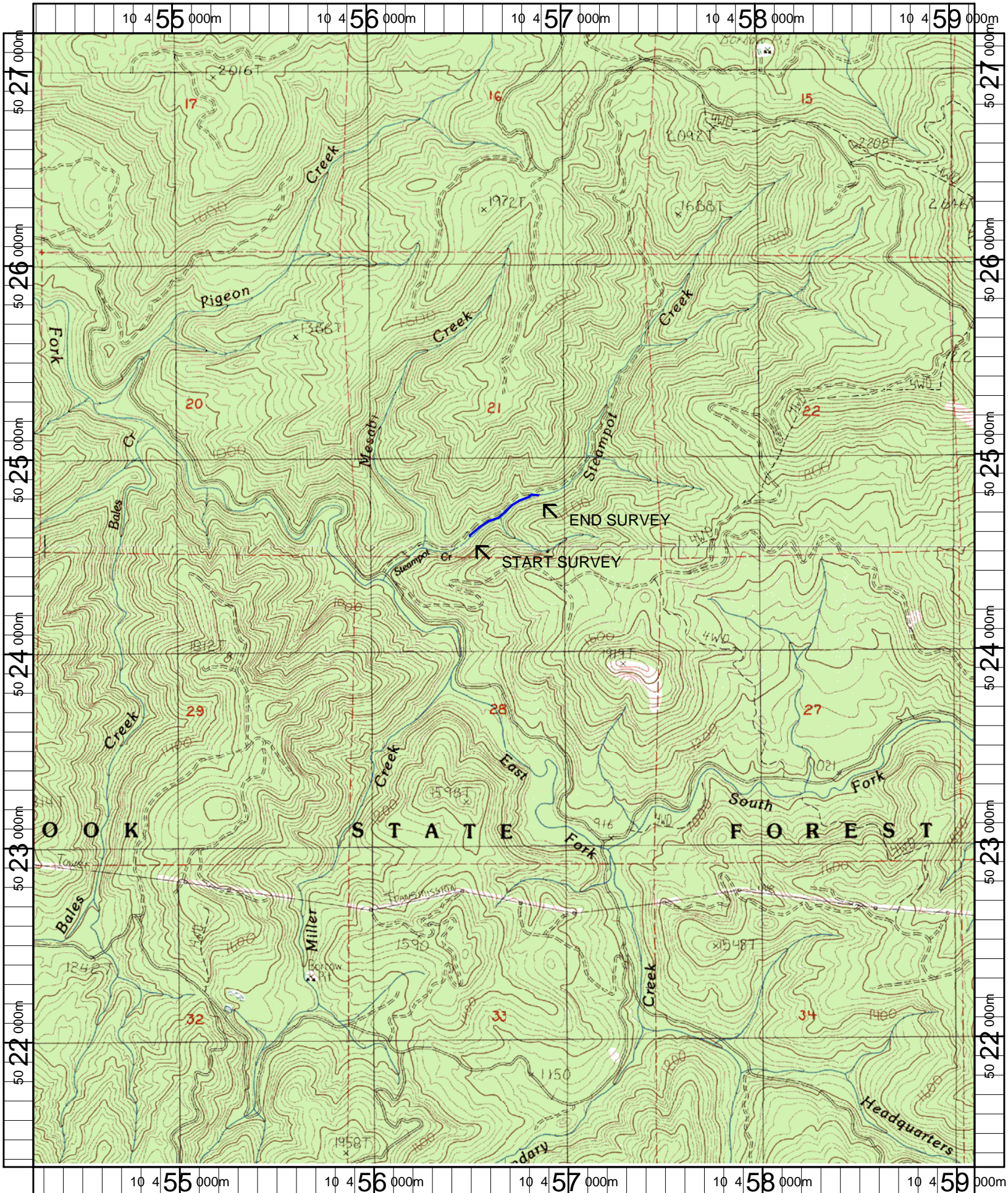
POOL SUMMARY			
	Total of all Channel Lengths		Primary Channel Length
	<u>Total</u>	<u># / Km</u>	<u># / Km</u>
All Pools:	15	28.4	34.2
Pools >=1m deep:	5	9.5	11.4
Complex pools (LWD pieces>=3):	8	15.1	18.2
Pool frequency (channel widths/pool):	4.7		
Residual pool depth (avg):	0.69		

Comment Summary

Restoration Monitoring Sites 2006

MONITORING AREA: 1-NC SITE ID: 238 STEAMPOT CREEK REFERENCE

UNIT#	TYPE	CHAN	DIST. (m)	COMMENTS	NOTE ESTIMATOR	NOTE NUMERATOR
1	RI	00	30	BV	T = 6.0	
8	SL	00	100.5		H = 0.4	
15	RB	01	155.9	/TJ		
18	SL	00	168.7		H = 0.4	
22	RB	01	235.8	/LS		
24	SL	01	249	/LS		
26	PP	02	261.2		SIDE CHAN MAY HAVE BEEN CUT TO	
27	SL	02	261.2		ROAD DURING HABITAT PROJECT	
29	SL	02	261.2		H = 0.3	
30	RI	02	261.2	SS/		
32	SL	02	261.2		H = 0.5	
38	SL	00	295.2		H = 0.7	
41	RB	01	341.9	TJ/		



Name: DOVRE PEAK
 Date: 2/15/2007
 Scale: 1 inch equals 2000 feet

Location: 10 0456688 E 5024264 N
 Caption: STEAMPOT CREEK REFERNECE RESTORATION SITE - TRASK BASIN