

ODFW AQUATIC INVENTORY PROJECT
OREGON PLAN FOR SALMON & WATERSHEDS
STREAM RESTORATION HABITAT REPORT

STREAM: Steampot Creek (NC-238)
BASIN: Trask River
SURVEY TYPE: Reference
DATE: March 9, 2005
SURVEY CREW: Brian Bangs, Sheila Davis
REPORT PREPARED BY: Paul Jacobsen
BASIN AREA: 6.2 km²
USGS MAPS: Trask
ECOREGION: Coast Range Volcanic

GENERAL DESCRIPTION:

The Steampot Creek habitat survey extended 449 meters. The channel was constrained by hillslopes in a moderate V-shaped valley. The average valley width index was 1.7 (range: 1.3-2.1). Land use for the reach was large (30-50 cm dbh) and second growth (15-30 cm dbh) trees. The average unit gradient was 3.6 percent. Rapids (40%) and scour pools (30%) dominated stream habitat. Gravel (31%) and sand (21%) dominated stream substrate. Wood volume was very high at 51.2 m³/100m. However, no key wood pieces were present.

COMMENTS:

There were no potential barriers to upstream fish migration in the surveyed length.

REACH 1

T02S-R07W-S21SW

REACH 1

Valley and Channel Summary

Valley Characteristics (Percent Reach Length)

<u>Narrow Valley Floor</u>		<u>Broad Valley Floor</u>	
Steep V-shape	0%	Constraining Terraces	0%
Moderate V-shape	100%	Multiple Terraces	0%
Open V-shape	0%	Wide Floodplain	0%
Valley Width Index	1.7	VWI Range:	1.3 - 2.1

Channel Morphology (Percent Reach Length)

<u>Constrained</u>		<u>Unconstrained</u>	
Hillslope	100%	Single Channel	0%
Bedrock	0%	Multiple Channel	0%
Terrace	0%	Braided Channel	0%
Alt. Terrace/Hill	0%		
Landuse	0%		

Channel Characteristics

<u>Type</u>	<u>Length (m)</u>	<u>Area (m2)</u>	<u>Dry Units</u>
Primary Channel	449	1,424	0
Secondary Channel	63	35	1
Off-Channel Units	35	34	0

Channel Dimensions (m)

<u>Wetted</u>	<u>Active</u>	<u>Floodprone</u> n = 5	<u>First Terrace</u> n = 0
Width: 2.6	Width: 6.9	10.2 (8.7 - 12.2)	(-)
Depth: 0.26	Height: 0.4	0.8 (0.6 - 1.3)	(-)

W:D ratio: 19.6
 Stream Flow Type: MF
 Average Unit Gradient: 3.6%
 Water temperature (°C): 8.0 - 8.0

Entrenchment (ACW:FPW ratio): 1.6
 Habitat Units/100m (total channel length): 9.3
 Habitat Units/100m (primary channel length): 11.4

Riparian, Bank, and Wood Summary

	<u>Primary</u>	<u>Secondary</u>
Land Use:	LT	ST
Riparian Vegetation:	D30	S

Bank Condition and Shade

<u>Bank Status</u>	<u>Percent Reach Length</u>	<u>Shade (% of 180)</u>
Actively Eroding:		Reach avg:
Undercut Banks:		Range: -

Large Wood Debris

	<u>Total</u>	<u>Total / 100m primary channel</u>
All pieces (>=3m x 0.15m):	181	40.3
Volume (m ³):	230	51.2
Key pieces (>=12m x 0.60m):	0	0.0

OREGON DEPT OF FISH AND WILDLIFE

STEAMPOT CREEK REFERENCE (1-NC, 238)

HABITAT INVENTORY

Report Date: 11/29/2005

Survey Date:

3/9/2005

REACH 1		T02S-R07W-S21SW					REACH 1					
HABITAT DETAIL												
Habitat Type	Number Units	Total Length (m)	Avg Width (m)	Avg Depth (m)	Total Area (m ²)	Large Boulders (#>0.5m)	Substrate Percent Wetted Area					
							S/O	Snd	Grvl	Cbl	Bldr	Bdrk
CASCADE/BEDROCK	2	16	1.1	0.10	20	0	0	5	23	18	3	53
POOL-BACKWATER	5	9	0.6	0.13	5	0	14	33	38	8	0	6
POOL-ISOLATED	2	5	1.7	0.25	8	0	78	15	3	3	3	0
POOL-LATERAL SCOUR	14	125	3.5	0.65	445	0	11	27	31	16	8	8
PUDDLED UNIT	1	16	0.6	0.15	10	0	15	30	40	15	0	0
RAPID/BEDROCK	2	11	3.2	0.05	37	0	0	5	3	3	0	90
RAPID/BOULDERS	12	187	2.9	0.10	565	0	3	17	35	28	12	4
RIFFLE	11	169	2.3	0.12	366	0	6	20	38	25	8	4
STEP/COBBLE	1	7	5.1	0.05	37	0	0	15	25	55	5	0
STEP/LOG	1	1	1.2	0.05	1	0	10	20	20	0	0	50
Total:	51	546	2.6	0.26	1,493	0	Avg: 10	21	31	19	7	11

HABITAT SUMMARY									
Habitat Group	Number Units	Total Length (m)	Avg Width (m)	Avg Depth (m)	Wetted Area		Large Boulders		
					(m ²)	Percent	Number	(# / 100m ²)	
Dammed & BW Pools	7	14	0.9	0.16	14	0.92%	0	0.0	
Scour Pools	14	125	3.5	0.65	445	29.78%	0	0.0	
Glides	0	0			0	0.00%	0	0.0	
Riffles	11	169	2.3	0.12	366	24.51%	0	0.0	
Rapids	14	198	3.0	0.09	601	40.26%	0	0.0	
Cascades	2	16	1.1	0.10	20	1.31%	0	0.0	
Step/Falls	2	8	3.2	0.05	38	2.56%	0	0.0	
Dry	1	16	0.6	0.15	10	0.66%	0	0.0	
Culverts	0	0			0	0.00%	0	0.0	

POOL SUMMARY			
	Total of all Channel Lengths		Primary Channel Length
	<u>Total</u>	<u># / Km</u>	<u># / Km</u>
All Pools:	21	38.4	46.8
Pools >=1m deep:	2	3.7	4.5
Complex pools (LWD pieces>=3):	7	12.8	15.6
Pool frequency (channel widths/pool):	3.8		
Residual pool depth (avg):	0.51		

Comment Summary

Restoration Monitoring Sites 2005

MONITORING AREA: **1-NC** SITE ID: **238** STEAMPOT CREEK REFERENCE

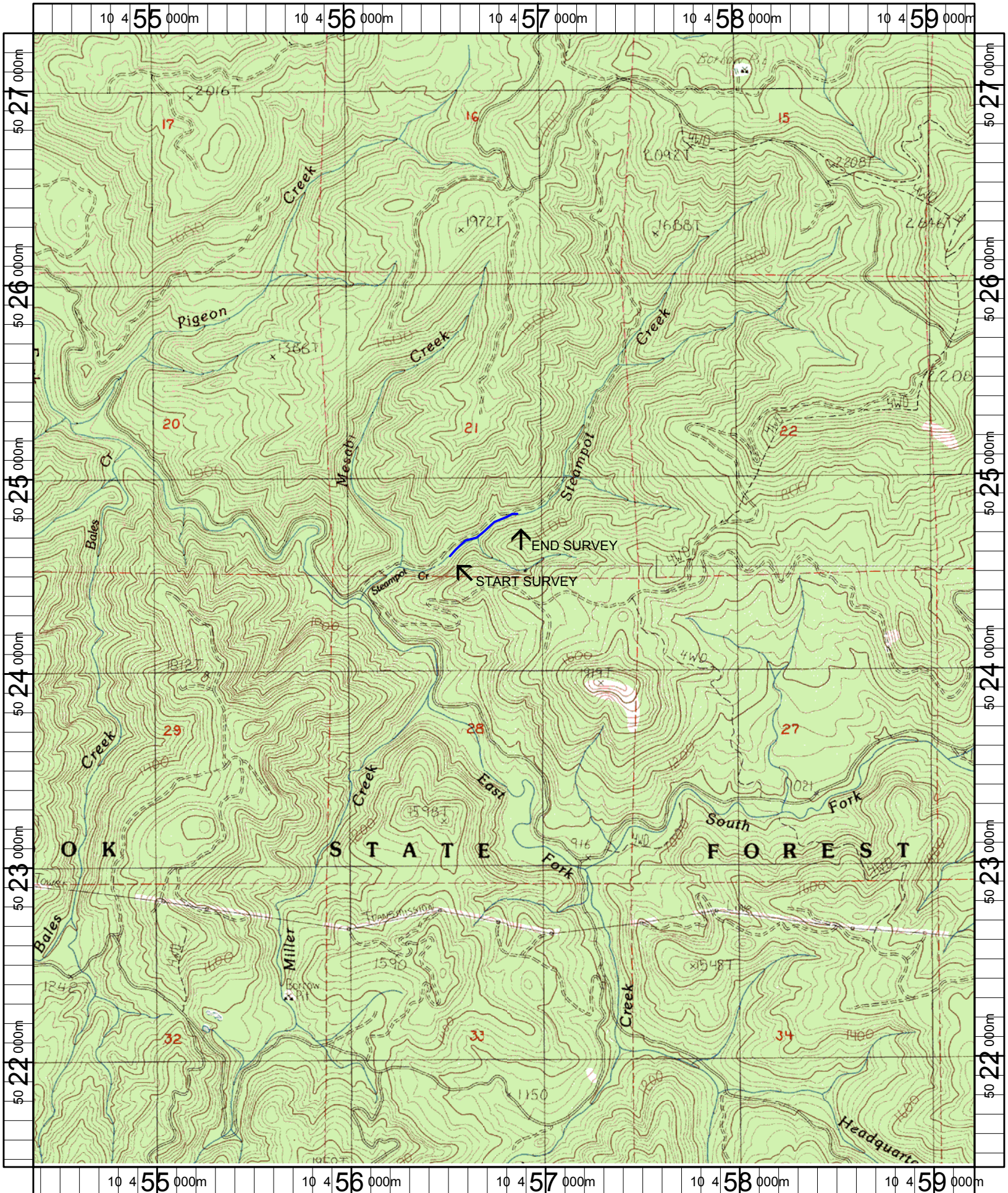
UNIT#	TYPE	CHAN	DIST. (m)	COMMENTS	NOTE ESTIMATOR	NOTE NUMERATOR
1	RB	00	8.4			CH MV D30 D15 LT ST
7	LP	00	68.6	CE/		OLD CE, DEFUNCT
11	RB	01	114.6	DJ		CH MV M30 G LT ST
12	IP	10	114.6	DJ		FRY
13	LP	00	120.6	DJ		
14	CR	00	125	DJ		
15	SL	00	125.8			H=1.1
17	LP	01	145.1	/TJ		FRY
19	RB	01	161.4	DJ		
23	RI	00	198.5	DJ		
26	RI	00	211			CH MV D30 S LT ST
28	RB	01	227.4	DJ		ALL CONNECTED
29	LP	01	230.9			AND
30	RI	01	241.1			CONTAIN
31	BW	10	241.1			MUCH
32	PD	02	241.1			SEDIMENT
35	LP	00	281.6	DJ		
36	SC	00	288.9			CH MV D30 S LT ST
37	LP	00	297.6	DJ		
40	RB	01	343.8	TJ/		
44	RI	02	356.3	DJ		

Comment Summary

Restoration Monitoring Sites 2005

MONITORING AREA: 1-NC SITE ID: 238 STEAMPOT CREEK REFERENCE

<u>UNIT#</u>	<u>TYPE</u>	<u>CHAN</u>	<u>DIST. (m)</u>	<u>COMMENTS</u>	<u>NOTE ESTIMATOR</u>	<u>NOTE NUMERATOR</u>
50	BW	10	427.6		CH MV D30 D15 LT ST	
51	RB	00	449.1		ENCOMPASSES END SIGN AT 11.4 M	



Name: DOVRE PEAK
 Date: 6/9/2005
 Scale: 1 inch equals 2000 feet

Location: 10 456805 E 5024365 N
 Caption: STEAMPOT CREEK REFERENCE RESTORATION SITE - TRASK BASIN