

**ODFW AQUATIC INVENTORY PROJECT
OREGON PLAN FOR SALMON & WATERSHEDS
STREAM RESTORATION HABITAT REPORT**

STREAM: Steampot Creek (NC-237)
BASIN: Trask River
SURVEY TYPE: Pre-Tx
DATE: March 9, 2005
SURVEY CREW: Brian Bangs, Sheila Davis
REPORT PREPARED BY: Paul Jacobsen
BASIN AREA: 6.2 km²
USGS MAPS: Dovre Peak, Trask
ECOREGION: Coast Range Volcanic

GENERAL DESCRIPTION:

The Steampot Creek habitat survey extended 598 meters. The channel was constrained by hillslopes in a moderate V-shaped valley. The average valley width index was 2.6 (range: 1.5-4.5). Land use for the reach was large (30-50 cm dbh) and second growth (15-30 cm dbh) trees. The average unit gradient was 3.7 percent. Rapids (37%) and riffles (35%) dominated stream habitat. Gravel (29%) and sand (23%) dominated stream substrate. Wood volume was high at 34.9 m³/100m. However key wood pieces were negligible.

COMMENTS:

There were no potential barriers to upstream fish migration in the surveyed length.

REACH 1

T02S-R07W-S28NW

REACH 1

Valley and Channel Summary

Valley Characteristics (Percent Reach Length)

<u>Narrow Valley Floor</u>		<u>Broad Valley Floor</u>	
Steep V-shape	0%	Constraining Terraces	0%
Moderate V-shape	100%	Multiple Terraces	0%
Open V-shape	0%	Wide Floodplain	0%
Valley Width Index	2.6	VWI Range:	1.5 - 4.5

Channel Morphology (Percent Reach Length)

<u>Constrained</u>		<u>Unconstrained</u>	
Hillslope	100%	Single Channel	0%
Bedrock	0%	Multiple Channel	0%
Terrace	0%	Braided Channel	0%
Alt. Terrace/Hill	0%		
Landuse	0%		

Channel Characteristics

<u>Type</u>	<u>Length (m)</u>	<u>Area (m2)</u>	<u>Dry Units</u>
Primary Channel	598	2,015	0
Secondary Channel	155	306	1
Off-Channel Units	35	40	0

Channel Dimensions (m)

<u>Wetted</u>	<u>Active</u>	<u>Floodprone</u> n = 5	<u>First Terrace</u> n = 2
Width: 3.0	Width: 5.6	9.5 (7.1 - 11.7)	12.1 (10.9 - 13.2)
Depth: 0.25	Height: 0.4	0.9 (0.6 - 1.3)	1.2 (1.1 - 1.2)

W:D ratio: 13.5
 Stream Flow Type: MF
 Average Unit Gradient: 3.7%
 Water temperature (°C): 7.0 - 7.0

Entrenchment (ACW:FPW ratio): 1.8
 Habitat Units/100m (total channel length): 9.3
 Habitat Units/100m (primary channel length): 12.2

Riparian, Bank, and Wood Summary

	<u>Primary</u>	<u>Secondary</u>
Land Use:	LT	ST
Riparian Vegetation:	D30	S

Bank Condition and Shade

<u>Bank Status</u>	<u>Percent Reach Length</u>	<u>Shade (% of 180)</u>
Actively Eroding:		Reach avg:
Undercut Banks:		Range: -

Large Wood Debris

	<u>Total</u>	<u>Total / 100m primary channel</u>
All pieces (>=3m x 0.15m):	214	35.8
Volume (m ³):	209	34.9
Key pieces (>=12m x 0.60m):	1	0.2

OREGON DEPT OF FISH AND WILDLIFE

STEAMPOT CREEK PRE-TX (1-NC, 237)

HABITAT INVENTORY

Report Date: 11/29/2005

Survey Date:

3/9/2005

REACH 1		T02S-R07W-S28NW					REACH 1					
HABITAT DETAIL												
Habitat Type	Number Units	Total Length (m)	Avg Width (m)	Avg Depth (m)	Total Area (m ²)	Large Boulders (#>0.5m)	Substrate Percent Wetted Area					
							S/O	Snd	Grvl	Cbl	Bldr	Bdrk
CASCADE/BEDROCK	1	14	4.4	0.05	60	0	0	15	10	0	0	75
POOL-BACKWATER	9	20	0.9	0.14	19	0	18	37	30	9	7	0
POOL-LATERAL SCOUR	15	140	3.2	0.59	493	0	12	26	28	15	12	7
POOL-PLUNGE	3	22	3.4	0.73	70	0	5	30	28	10	7	20
PUDDLED UNIT	1	21	0.6	0.05	13	0	20	35	40	5	0	0
RAPID/BEDROCK	5	52	2.6	0.10	130	0	4	12	15	9	14	46
RAPID/BOULDERS	16	195	3.9	0.11	737	0	4	15	28	17	31	6
RIFFLE	18	296	3.5	0.16	809	0	7	21	37	18	13	4
RIFFLE W/ POCKETS	1	25	0.8	0.05	20	0	0	20	35	25	0	20
STEP/BEDROCK	2	1	0.9	0.18	1	0	0	0	0	0	0	100
STEP/LOG	2	4	2.2	0.15	9	0	5	48	48	0	0	0
Total:	73	789	3.0	0.25	2,362	0	Avg: 8	23	29	14	15	12

HABITAT SUMMARY									
Habitat Group	Number Units	Total Length (m)	Avg Width (m)	Avg Depth (m)	Wetted Area		Large Boulders		
					(m ²)	Percent	Number	(# / 100m ²)	
Dammed & BW Pools	9	20	0.9	0.14	19	0.82%	0	0.0	
Scour Pools	18	162	3.2	0.61	563	23.85%	0	0.0	
Glides	0	0			0	0.00%	0	0.0	
Riffles	19	321	3.3	0.15	829	35.12%	0	0.0	
Rapids	21	246	3.6	0.11	867	36.72%	0	0.0	
Cascades	1	14	4.4	0.05	60	2.53%	0	0.0	
Step/Falls	4	5	1.6	0.16	10	0.43%	0	0.0	
Dry	1	21	0.6	0.05	13	0.54%	0	0.0	
Culverts	0	0			0	0.00%	0	0.0	

POOL SUMMARY			
	Total of all Channel Lengths		Primary Channel Length
	<u>Total</u>	<u># / Km</u>	<u># / Km</u>
All Pools:	27	34.2	45.1
Pools >=1m deep:	1	1.3	1.7
Complex pools (LWD pieces>=3):	5	6.3	8.4
Pool frequency (channel widths/pool):	5.3		
Residual pool depth (avg):	0.47		

Comment Summary

Restoration Monitoring Sites 2005

MONITORING AREA: 1-NC SITE ID: 237 STEAMPOT CREEK PRE-TX

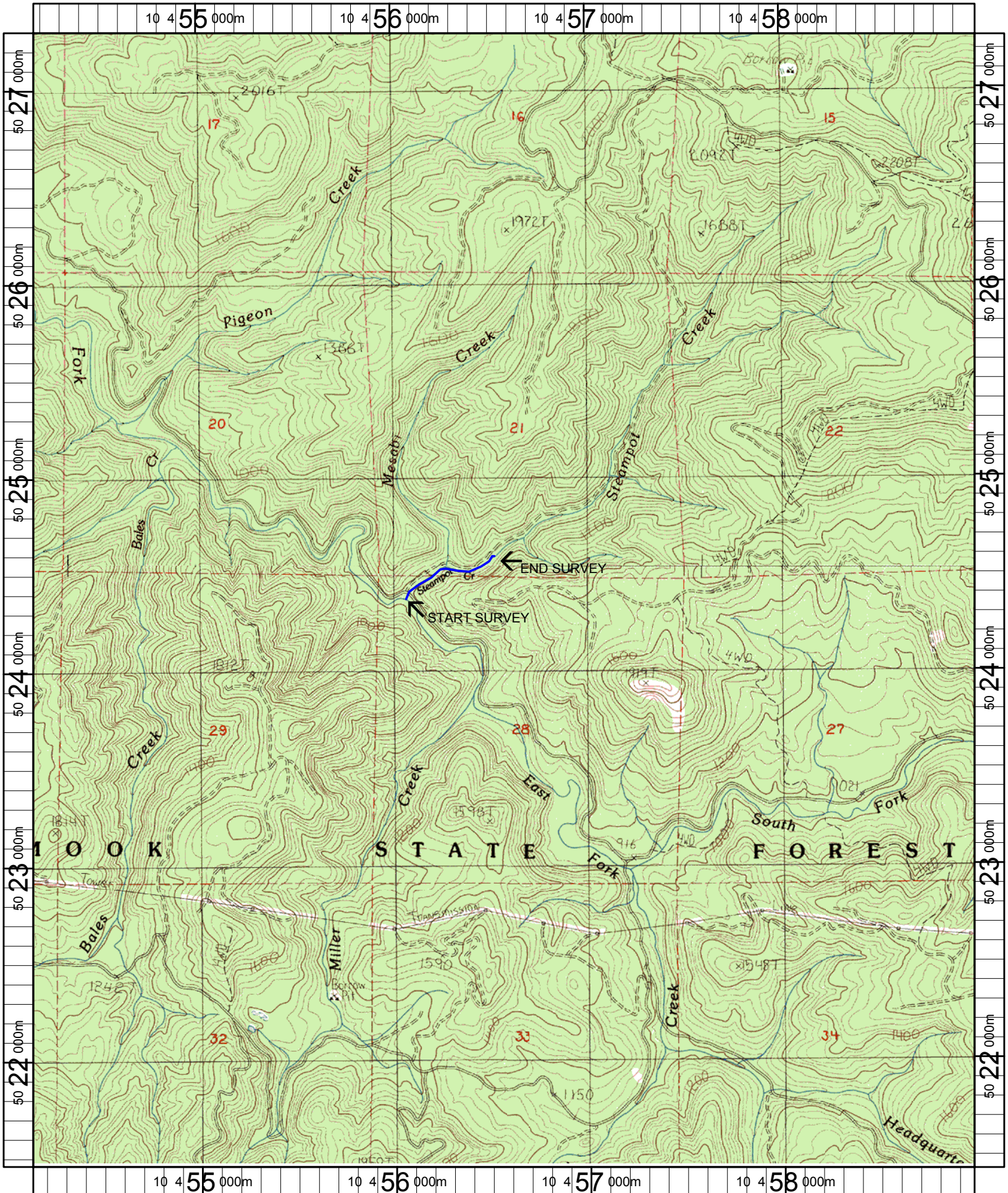
UNIT#	TYPE	CHAN	DIST. (m)	COMMENTS	NOTE ESTIMATOR	NOTE NUMERATOR
1	RR	00	11.5		CA CT D30 S LT ST	
13	RB	01	76.5	DJ		
14	RB	02	76.5	DJ		
15	RI	02	76.5		HIGH SLOPE, RIFFLE-LIKE CHARAC	
19	RB	00	124.8		CH MV D30 S LT ST	
21	RB	00	157.2	DJ		
23	SR	00	167.45		H=0.4	
25	SR	00	177.85		H=0.4	
30	RB	02	228.45	TJ/, DJ		
33	LP	00	243.55	DJ	CA MT D30 F LT ST	
37	RB	00	288.75	DJ		
41	PP	00	318.15	DJ		
42	SL	00	319.55		H=0.55	
45	LP	00	366.25		CH MV M30 G LT ST	
46	RI	00	384.85		ADULT FISH, UN-ID SPP	
47	RB	00	394.55	DJ		
50	RR	01	425.15	DJ		
52	SL	01	427.35		H=1.2	
53	RI	01	448.65	DJ, EI	CHANNEL BEGINS TO FLOW	
54	RI	01	467.15	EI, DJ	UNDER LOG JAM AND EARTH ABLE T	
55	RI	01	488.85	DJ	TO SEE PARTS OF STREAM	

Comment Summary

Restoration Monitoring Sites 2005

MONITORING AREA: 1-NC SITE ID: 237 STEAMPOT CREEK PRE-TX

UNIT#	TYPE	CHAN	DIST. (m)	COMMENTS	NOTE ESTIMATOR	NOTE NUMERATOR
56	RR	02	488.85			RIFFLE-LIKE CHARACTERISTICS
58	LP	02	488.85			FISH FRY
64	RI	00	534.45	DJ		
66	LP	01	549.45	DJ		
67	RI	02	549.45	DJ		
68	BW	10	549.45			FRY
73	LP	00	598.15			CH MV D30 D15 LT ST



Name: DOVRE PEAK
 Date: 6/9/2005
 Scale: 1 inch equals 2000 feet

Location: 10 456569 E 5024367 N
 Caption: STEAMPOT CREEK RESTORATION SITE - TRASK BASIN