

ODFW AQUATIC INVENTORY PROJECT
OREGON PLAN FOR SALMON & WATERSHEDS
STREAM RESTORATION HABITAT REPORT

STREAM: Foley Creek (N-226)
BASIN: Nehalem River
SURVEY TYPE: Pre-Tx
DATE: March 17, 2004
SURVEY CREW: Michael Scheu, Carmen Vandyke
REPORT PREPARED BY: Paul Jacobsen
BASIN AREA: 44.1 km²
USGS MAPS: Nehalem
ECOREGION: Coast Range Sitka Spruce

GENERAL DESCRIPTION:

The Foley Creek habitat survey extended 794 meters. The channel was alternately constrained by hillslopes and terraces in a broad valley floor. The average valley width index was 18.6 (range: 10.0-20.0). Land use for the reach was second growth (15-30 cm dbh) and large (30-50 cm dbh) trees. The average unit gradient was 0.9 percent. Scour pools (53%) and riffles (32%) dominated stream habitat. Gravel (64%) and sand (18%) dominated stream substrate. Wood volume was low at 10.3 m³/100m.

COMMENTS:

There were no potential barriers to upstream fish migration in the surveyed length.

REACH 1

T02N-R10W-S23SW

REACH 1

Valley and Channel Summary

Valley Characteristics (Percent Reach Length)

<u>Narrow Valley Floor</u>		<u>Broad Valley Floor</u>	
Steep V-shape	0%	Constraining Terraces	100%
Moderate V-shape	0%	Multiple Terraces	0%
Open V-shape	0%	Wide Floodplain	0%
Valley Width Index	18.6	VWI Range:	10 - 20

Channel Morphology (Percent Reach Length)

<u>Constrained</u>		<u>Unconstrained</u>	
Hillslope	0%	Single Channel	0%
Bedrock	0%	Multiple Channel	0%
Terrace	0%	Braided Channel	0%
Alt. Terrace/Hill	100%		
Landuse	0%		

Channel Characteristics

<u>Type</u>	<u>Length (m)</u>	<u>Area (m2)</u>	<u>Dry Units</u>
Primary	794	2,944	0
Secondary	31	52	0

Channel Dimensions (m)

<u>Wetted</u>	<u>Active</u>	<u>Floodprone</u> n = 7	<u>First Terrace</u> n = 7
Width: 3.5	Width: 5.3	13.8 (6.8 - 25.6)	16.7 (8 - 30)
Depth: 0.46	Height: 0.5	1.1 (1 - 1.2)	1.4 (1.2 - 1.8)

W:D ratio: 9.9
Stream Flow Type: MF
Avg. Unit Gradient: 0.9%

Entrenchment (ACW:FPW ratio): 2.7
Water temp (°C): 9.0 - 9.0
Habitat Units/100m: 9.0

Riparian, Bank, and Wood Summary

	<u>Primary</u>	<u>Secondary</u>
Land Use:	ST	LT
Riparian Vegetation:	M15	C50

Bank Condition and Shade

<u>Bank Status</u>	<u>Percent Reach Length</u>	<u>Shade (% of 180)</u>
Actively Eroding:		Reach avg:
Undercut Banks:		Range: -

Large Wood Debris

	<u>Total</u>	<u>Total / 100m</u>
All pieces (>=3m x 0.15m):	87	11.0
Volume (m ³):	82	10.3
Key pieces (>=10m x 0.60m):	7	0.9

OREGON DEPARTMENT OF FISH AND WILDLIFE

FOLEY CREEK PRE-TX (N-226)

HABITAT INVENTORY

Report Date: 6/16/2004

Survey Date:

3/17/2004

REACH 1

T02N-R10W-S23SW

REACH 1

HABITAT DETAIL

Habitat Type	Number Units	Total Length (m)	Avg Width (m)	Avg Depth (m)	Total Area (m ²)	Large Boulders (#>0.5m)	Substrate Percent Wetted Area					
							S/O	Snd	Grvl	Cbl	Bldr	Bdrk
CULVERT CROSSING	1	9	1.6	0.20	14	0	20	20	20	20	20	0
POOL-BACKWATER	2	10	2.8	0.55	26	0	10	64	27	0	0	0
POOL-LATERAL SCOUR	35	413	3.9	0.76	1,603	0	7	24	60	8	0	0
RAPID/BOULDERS	6	67	2.6	0.17	192	0	1	8	58	34	0	0
RIFFLE	17	261	3.4	0.21	948	0	4	14	70	13	0	0
STEP/COBBLE	13	65	3.2	0.13	214	0	0	6	76	17	0	0
Total:	74	825	3.5	0.46	2,997	0	Avg: 5	18	64	13	0	0

HABITAT SUMMARY

Habitat Group	Number Units	Total Length (m)	Avg Width (m)	Avg Depth (m)	Wetted Area		Large Boulders	
					(m ²)	Percent	Number	(# / 100m ²)
Dammed & BW Pools	2	10	2.8	0.55	26	0.85%	0	0.0
Scour Pools	35	413	3.9	0.76	1,603	53.49%	0	0.0
Glides	0	0			0	0.00%	0	0.0
Riffles	17	261	3.4	0.21	948	31.64%	0	0.0
Rapids	6	67	2.6	0.17	192	6.41%	0	0.0
Cascades	0	0			0	0.00%	0	0.0
Step/Falls	13	65	3.2	0.13	214	7.14%	0	0.0
Dry	0	0			0	0.00%	0	0.0
Culverts	1	9	1.6	0.20	14	0.47%	0	0.0

POOL SUMMARY

	<u>Total</u>	<u># / Km</u>	
All Pools:	37	44.9	31
Pools >=1m deep:	2	2.4	
Complex pools (LWD pieces>=3):	8	9.7	
Pool frequency (channel widths/pool):	4.2		
Residual pool depth (avg):	0.59		

STREAM SUMMARY

FOLEY CREEK PRE-TX (N-226)

Number Units	Total Length (m)	Avg Width (m)	Avg Depth (m)	Total Area (m ²)	Substrate						Large Boulders (#>0.5m)
					Percent Wetted Area						
					S/O	Snd	Grvl	Cbl	Bldr	Bdrk	
74	825	3.5	0.46	2,997	5	18	64	13	0	0	

Habitat Group	Wetted Area	
	(m ²)	Percent
Dammed & BW Pools	26	0.85%
Scour Pools	1,603	53.49%
Glides	0	0.00%
Riffles	948	31.64%
Rapids	192	6.41%
Cascades	0	0.00%
Step/Falls	214	7.14%
Dry	0	0.00%
Culverts	14	0.47%

Comment Summary

Oregon Plan Monitoring Sites 2002

MONITORING AREA: 1-NC SITE ID: 226 FOLEY CREEK TRIBUTARY PRE-TX (

UNIT#	TYPE	CHAN	DIST. (m)	COMMENTS	NOTE ESTIMATOR	NOTE NUMERATOR
1	SC	00	3.8		T=8C	
2	LP	00	22.1	BC, CS/CS	SG=8M	
3	LP	00	41.5		SG=10M, FRY	
4	RI	00	57.7		FRY	
5	LP	00	71.7	HS, WL	SG=6M, 3 LOGS, ELK PRI	
6	RI	00	93.5	/SS	SG=4M	
7	LP	00	102.2		SG=4M	
9	LP	00	119.4		SG=4M, ORANGE FLAG "	
10	RI	00	129.5		FISH SKIN	
12	RI	00	165.7		SG=10M	
13	LP	00	173.2		ELK PRINTS	
14	RI	01	201.8		SG=16M	
19	RI	00	227.1		SG=4M	
20	LP	00	241.6		SG=4M	
21	LP	00	259.5		SG=6M, REDD, COHO FR	
22	LP	00	269.1		COHO FRY	
24	LP	00	287.5		TROUT, TIMBER SALE BN	
25	RI	00	297.8	/SS		
27	RI	00	318.7		SG=4M	
28	LP	00	330.1		SG=6M, 6" TROUT	
29	LP	00	340.5		TIMBER SALE BNDRY	

Comment Summary

Oregon Plan Monitoring Sites 2002

MONITORING AREA: **1-NC** SITE ID: **226** FOLEY CREEK TRIBUTARY PRE-TX (

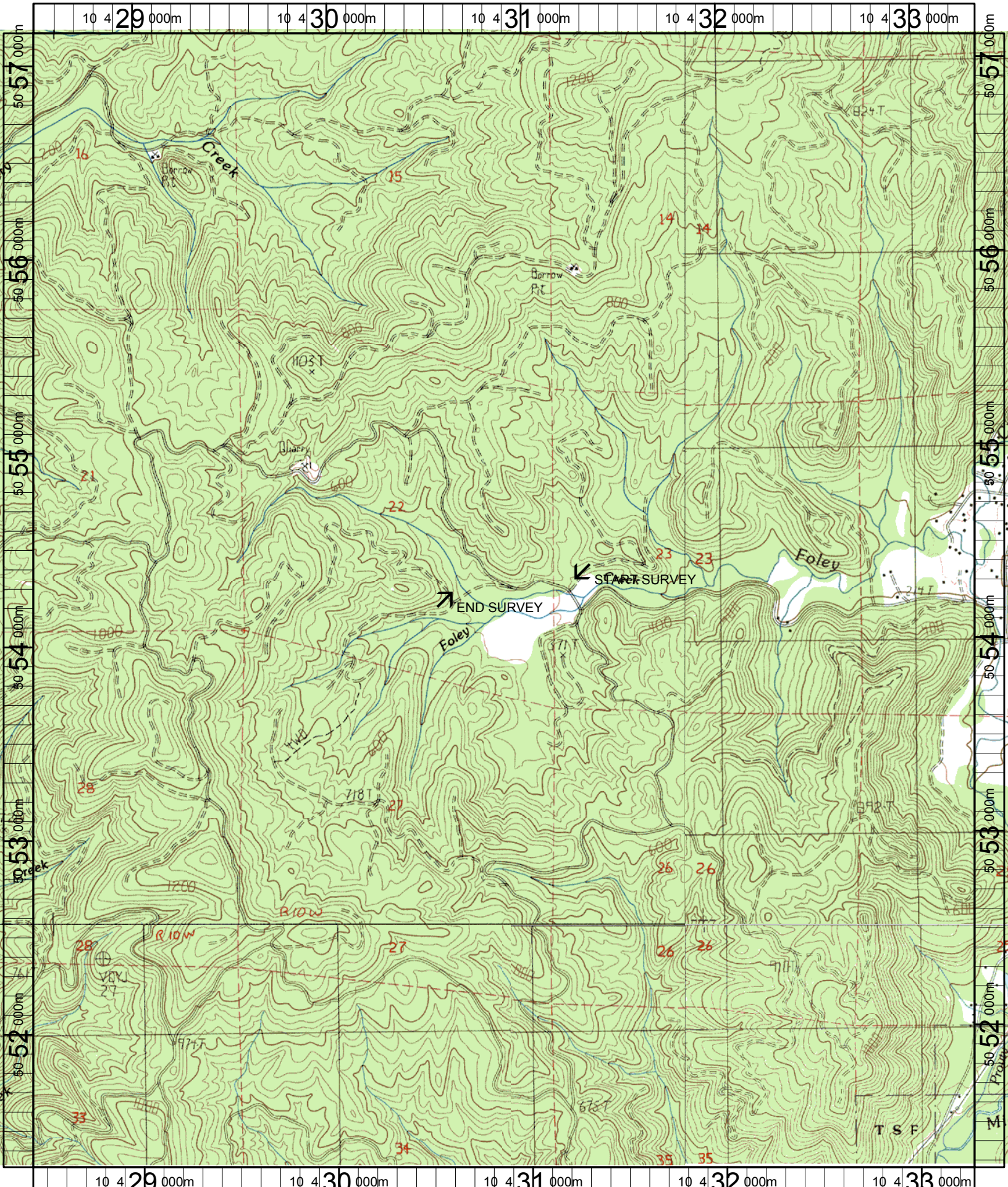
UNIT#	TYPE	CHAN	DIST. (m)	COMMENTS	NOTE ESTIMATOR	NOTE NUMERATOR
31	LP	00	356.1		SG=6M	
32	RI	00	364.5	BV		
34	RI	00	391.3		SG=12M, TIMBER SALE B	
38	LP	00	425.4		COHO FRY	
39	SC	00	426.7		SALE BNDRY	
43	RI	00	461.2		SG=4M, SALE BNDRY	
46	LP	00	493.2		SALE BNDRY	
51	LP	00	538.5		SG=10M, COHO FRY	
52	RI	00	560.9		SG=20M, SALE BNDRY	
54	SC	00	576.8	BV		
55	LP	00	586.6	BV	COHO FRY	
59	LP	00	626.2	/TJ		
60	RI	11	626.2		T=10C, ACW=2.0M	
61	LP	00	643.7	BV	SALE BNDRY	
64	RI	00	680.7	BV		
65	LP	00	695.5	BV	SG=6M, SALE BNDRY	
67	LP	00	710.1		TROUT	
68	RB	00	727.6	WL	TRAIL	
69	LP	00	741.8	HS, BV	SALE BNDRY, 3 LOGS-HS	
70	RI	01	760.2	/TJ,BV,HS	3 LOGS	
71	RB	11	760.2		ACW=2.8, T=9C	

Comment Summary

Oregon Plan Monitoring Sites 2002

MONITORING AREA: 1-NC SITE ID: 226 FOLEY CREEK TRIBUTARY PRE-TX (

<u>UNIT#</u>	<u>TYPE</u>	<u>CHAN</u>	<u>DIST. (m)</u>	<u>COMMENTS</u>	<u>NOTE ESTIMATOR</u>	<u>NOTE NUMERATOR</u>
73	CC	00	782.7	CC	1.7*2.4 STEEL	
74	RB	00	793.8	BV		



Name: NEHALEM
 Date: 7/22/2004
 Scale: 1 inch equals 2000 feet

Location: 10 430877 E 5054221 N
 Caption: FOLEY CREEK RESTORATION SITE - NEHALEM BASIN