



**OREGON DEPARTMENT OF FISH AND WILDLIFE    NORTHROP CREEK UPPER POST-TX (N-203)**

**HABITAT INVENTORY**

Report Date: 5/6/03

Survey Date:

1/23/03

<b>REACH</b>		<b>T06N-R06W-S07NW</b>						<b>REACH</b>					
<b>HABITAT DETAIL</b>													
Habitat Type	Number Units	Total Length (m)	Avg Width (m)	Avg Depth (m)	Total Area (m <sup>2</sup> )	Large Boulders (#>0.5m)	Substrate						
							Percent Wetted Area						
							S/O	Snd	Grvl	Cbl	Bldr	Bdrk	
POOL-BACKWATER	1	6	3.5	0.30	21	0	100	0	0	0	0	0	
POOL-ISOLATED	1	26	2.5	0.80	65	0	100	0	0	0	0	0	
POOL-LATERAL SCOUR	15	363	7.9	1.01	2,925	0	33	36	17	11	0	3	
POOL-STRAIGHT SCOUR	2	58	5.3	1.10	303	0	35	35	20	10	0	0	
RIFFLE	7	157	4.8	0.33	775	0	29	30	25	15	0	0	
<b>Total:</b>	26	609	6.5	0.80	4,089	0	<b>Avg 37</b>	32	18	11	0	2	

<b>HABITAT SUMMARY</b>									
Habitat Group	Number Units	Total Length (m)	Avg Width (m)	Avg Depth (m)	Wetted Area		Large Boulders		
					(m <sup>2</sup> )	Percent	Number	(# / 100m <sup>2</sup> )	
Dammed & BW Pools	2	32	3.0	0.55	86	2.10%	0	0.0	
Scour Pools	17	420	7.6	1.02	3,228	78.94%	0	0.0	
Glides	0	0			0	0.00%	0	0.0	
Riffles	7	157	4.8	0.33	775	18.95%	0	0.0	
Rapids	0	0			0	0.00%	0	0.0	
Cascades	0	0			0	0.00%	0	0.0	
Step/Falls	0	0			0	0.00%	0	0.0	
Dry	0	0			0	0.00%	0	0.0	
Culverts	0	0			0	0.00%	0	0.0	

<b>POOL SUMMARY</b>		
	<u>Total</u>	<u># / Km</u>
All Pools:	19	35.7
Pools >=1m deep:	8	15.0
Complex pools (LWD pieces>=3):	10	18.8
Pool frequency (channel widths/pool):	3.2	
Residual pool depth (avg):	0.71	

**STREAM SUMMARY**

**NORTHRUP CREEK UPPER POST-TX (N-203)**

Number Units	Total Length (m)	Avg Width (m)	Avg Depth (m)	Total Area (m <sup>2</sup> )	Substrate						Large Boulders (#>0.5m)
					Percent Wetted Area						
					S/O	Snd	Grvl	Cbl	Bldr	Bdrk	
26	609	6.5	0.80	4,089	37	32	18	11	0	2	

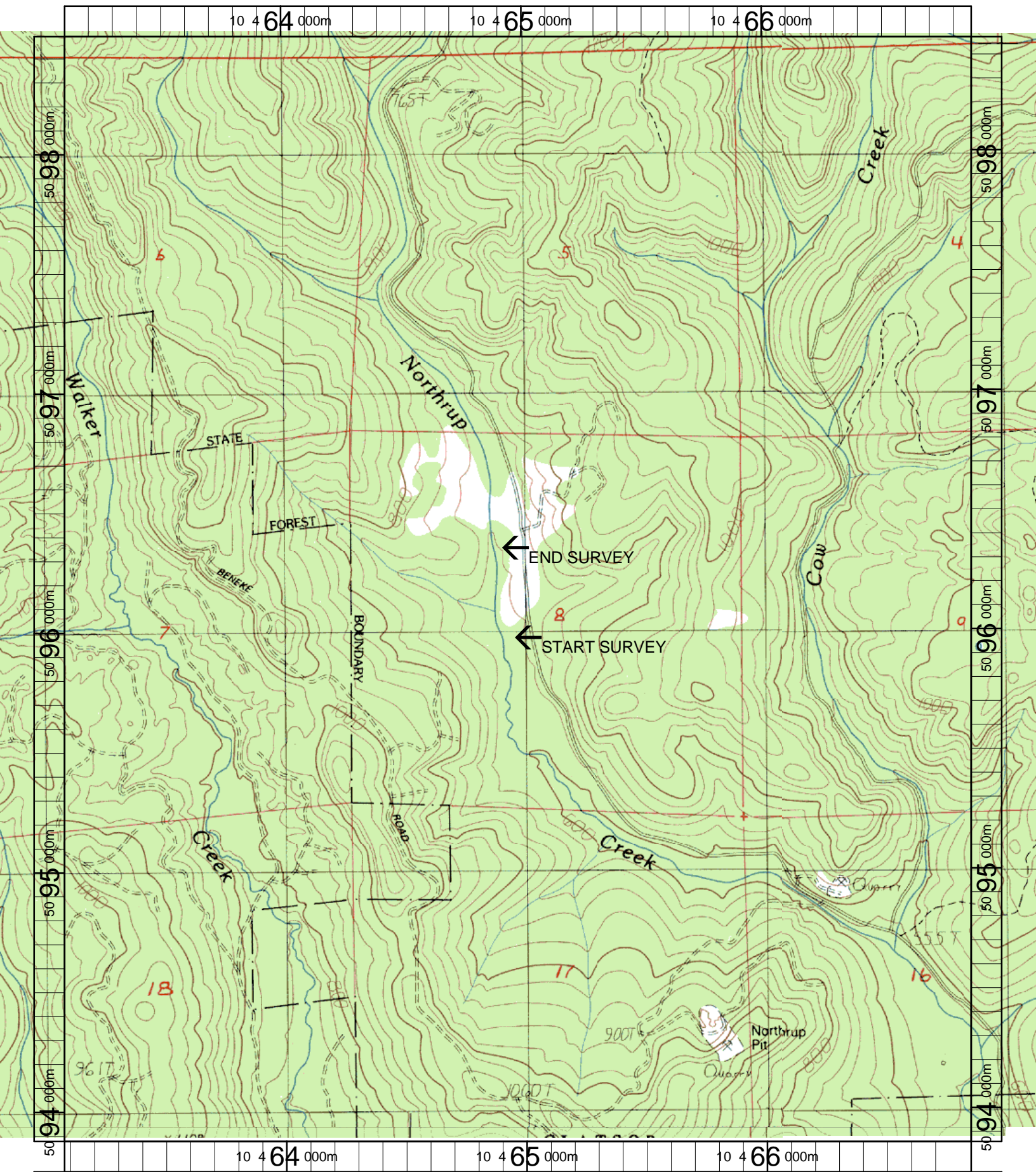
Habitat Group	Wetted Area	
	(m <sup>2</sup> )	Percent
Dammed & BW Pools	86	2.10%
Scour Pools	3,228	78.94%
Glides	0	0.00%
Riffles	775	18.95%
Rapids	0	0.00%
Cascades	0	0.00%
Step/Falls	0	0.00%
Dry	0	0.00%
Culverts	0	0.00%

# Comment Summary

## Restoration Monitoring Sites 2003

MONITORING AREA: 1-NC    SITE ID: 203    NORTHRUP CREEK UPPER POST-TX (N-203)

UNIT#	TYPE	CHAN	DIST. (m)	COMMENTS	NOTE ESTIMATOR	NOTE NUMERATOR
1	LP	00	23.4	BV		
3	LP	00	57	BV		
4	RI	00	89.4	HS	.8M DEEP POCKET	
8	LP	00	150.6	HS, BV		
9	SP	00	183.1	HS, BV		
10	RI	00	201.1	BV		
11	LP	00	212.1	HS		
12	LP	00	234.8		BRK=HARD CLAY	
13	LP	00	259.9	T=8C		
14	LP	01	275.5	BV, HS		
15	IP	10	275.5	HS	IP/	
16	LP	00	306.7	HS	2M TAILOUT	
20	RI	01	402.5	/TJ		
23	LP	00	467.6	HS	5M POOL TAILOUT	
25	BW	10	494.5	/BW		
26	LP	00	532.5	HS, BV	T=8C	



Name: NICOLAI MT  
 Date: 6/11/2003  
 Scale: 1 inch equals 1666 feet

Location: 10 464970 E 5096179 N  
 Caption: NORTHRUP CREEK UPPER RESTORATION SITE -  
 NEHALEM BASIN