

REACH

T05S-R10W-S36SE

REACH

**Valley and Channel Summary**

Valley Characteristics (Percent Reach Length)

<u>Narrow Valley Floor</u>		<u>Broad Valley Floor</u>	
Steep V-shape	0%	Constraining Terraces	100%
Moderate V-shape	0%	Multiple Terraces	0%
Open V-shape	0%	Wide Floodplain	0%
Valley Width Index	4.2	VWI Range:	3.5 - 5.5

Channel Morphology (Percent Reach Length)

<u>Constrained</u>		<u>Unconstrained</u>	
Hillslope	0%	Single Channel	0%
Bedrock	0%	Multiple Channel	0%
Terrace	100%	Braided Channel	0%
Alt. Terrace/Hill	0%		
Landuse	0%		

Channel Characteristics

<u>Type</u>	<u>Length (m)</u>	<u>Area (m2)</u>	<u>Dry Units</u>
Primary	531	4,846	0
Secondary	67	79	0

Channel Dimensions (m)

<u>Wetted</u>		<u>Active</u>		<u>Floodprone</u>	<u>First Terrace</u>
Width	7.6	Width	10.6	14.2	18.2
Depth	0.49	Height	0.5	1.0	1.4
W:D ratio	20.3	Entrenchment	1.3		

Stream Flow Type: HF Water temp (C): 7.0 - 7.0  
 Avg. Unit Gradient: 1.5% Habitat Units/100m: 5.8

**Riparian, Bank, and Wood Summary**

	<u>Primary</u>	<u>Secondary</u>
Land Use:	ST	
Riparian Vegetation:	M30	S

Bank Condition and Shade

<u>Bank Status</u>	<u>Percent Reach Length</u>	<u>Shade (% of 180)</u>
Actively Eroding:		Reach avg:
Undercut Banks:		Range: -

Large Wood Debris

	<u>Total</u>	<u>Total / 100m</u>
All pieces (>=3m x 0.15m):	35	6.6
Volume (m <sup>3</sup> ):	154	29.0
Key pieces (>=10m x 0.60m):	15	2.8

OREGON DEPARTMENT OF FISH AND WILDLIFE

S FK LITTLE NESTUCCA POST-TX (N-176)

HABITAT INVENTORY

Report Date: 5/6/03

Survey Date:

2/4/03

REACH		T05S-R10W-S36SE					REACH					
HABITAT DETAIL												
Habitat Type	Number Units	Total Length (m)	Avg Width (m)	Avg Depth (m)	Total Area (m <sup>2</sup> )	Large Boulders (#>0.5m)	Substrate Percent Wetted Area					
							S/O	Snd	Grvl	Cbl	Bldr	Bdrk
POOL-LATERAL SCOUR	10	188	8.0	0.86	1,576	0	2	13	24	20	2	41
POOL-STRAIGHT SCOUR	1	13	10.0	1.00	132	0	10	40	25	10	5	10
RAPID/BEDROCK	5	114	10.7	0.32	1,221	0	0	1	9	11	2	77
RAPID/BOULDERS	3	59	3.9	0.17	277	0	2	18	50	15	5	10
RIFFLE	9	209	7.7	0.36	1,661	0	3	10	22	30	3	32
STEP/BEDROCK	1	7	6.5	0.30	46	0	0	10	10	0	0	80
STEP/COBBLE	2	8	2.3	0.05	12	0	0	8	63	30	0	0
<b>Total:</b>	<b>31</b>	<b>597</b>	<b>7.6</b>	<b>0.49</b>	<b>4,925</b>	<b>0</b>	<b>Avg 2</b>	<b>11</b>	<b>25</b>	<b>20</b>	<b>2</b>	<b>39</b>

HABITAT SUMMARY								
Habitat Group	Number Units	Total Length (m)	Avg Width (m)	Avg Depth (m)	Wetted Area		Large Boulders	
					(m <sup>2</sup> )	Percent	Number	(# / 100m <sup>2</sup> )
Dammed & BW Pools	0	0			0	0.00%	0	0.0
Scour Pools	11	201	8.2	0.87	1,708	34.68%	0	0.0
Glides	0	0			0	0.00%	0	0.0
Riffles	9	209	7.7	0.36	1,661	33.74%	0	0.0
Rapids	8	172	8.1	0.26	1,498	30.42%	0	0.0
Cascades	0	0			0	0.00%	0	0.0
Step/Falls	3	15	3.7	0.13	57	1.16%	0	0.0
Dry	0	0			0	0.00%	0	0.0
Culverts	0	0			0	0.00%	0	0.0

POOL SUMMARY		
	<u>Total</u>	<u># / Km</u>
All Pools:	11	20.7
Pools >=1m deep:	4	7.5
Complex pools (LWD pieces>=3):	3	5.7
Pool frequency (channel widths/pool):	5.1	
Residual pool depth (avg):	0.54	

**STREAM SUMMARY**

**S FK LITTLE NESTUCCA POST-TX (N-176)**

Number Units	Total Length (m)	Avg Width (m)	Avg Depth (m)	Total Area (m <sup>2</sup> )	Substrate Percent Wetted Area						Large Boulders (>0.5m)
					S/O	Snd	Grvl	Cbl	Bldr	Bdrk	
31	597	7.6	0.49	4,925	2	11	25	20	2	39	

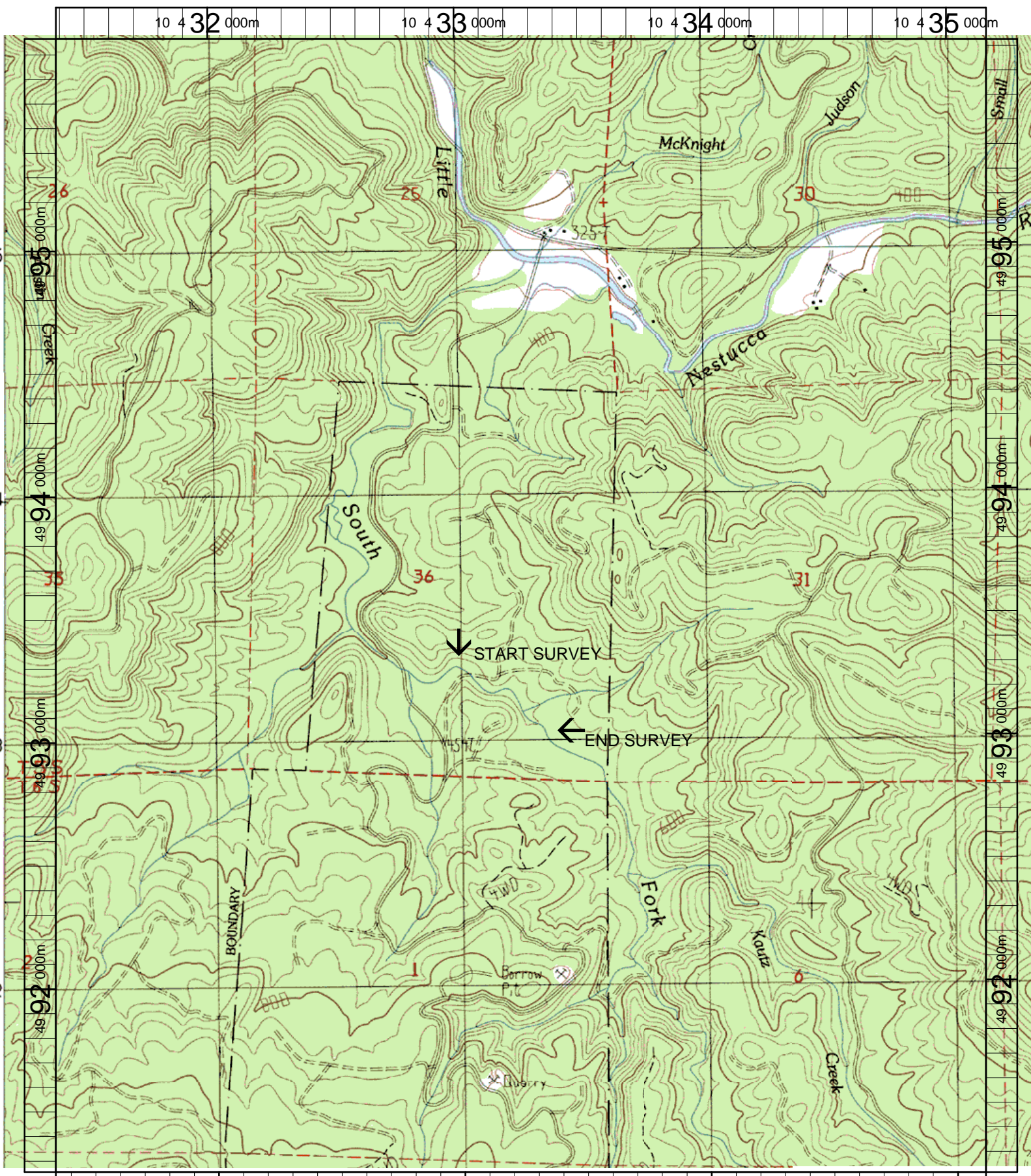
Habitat Group	Wetted Area	
	(m <sup>2</sup> )	Percent
Dammed & BW Pools	0	0.00%
Scour Pools	1,708	34.68%
Glides	0	0.00%
Riffles	1,661	33.74%
Rapids	1,498	30.42%
Cascades	0	0.00%
Step/Falls	57	1.16%
Dry	0	0.00%
Culverts	0	0.00%

# Comment Summary

## Restoration Monitoring Sites 2003

MONITORING AREA: 1-NC    SITE ID: 176    S FK LITTLE NESTUCCA POST-TX (N-176)

UNIT#	TYPE	CHAN	DIST. (m)	COMMENTS	NOTE ESTIMATOR	NOTE NUMERATOR
1	SP	00	13.2			START SIGN LEFT ALDER
3	LP	00	44.2	HS #1		
4	RI	00	74.2	SS/		OLD BC, "END SIGN U113
6	LP	00	125.2	HS#2		T=7C/1000
8	SR	00	151.2	HS #3		
9	LP	00	174.3			SM FISH
13	RI	00	277.6			SM POOL/
14	RI	01	296.6	SS/		
17	LP	01	324.3	TJ/		
21	RI	00	399.3	SS/		
23	LP	01	430.9	TJ/, BV		
24	SC	11	430.9	BV		
27	LP	01	460.9	/TJ		
29	RI	00	485.9	/SS		
31	LP	00	530.5			T=7C/1245, END SIGN RT



Name: DOLPH  
 Date: 6/11/2003  
 Scale: 1 inch equals 1666 feet

Location: 10 433245 E 4993544 N  
 Caption: SOUTH FORK LITTLE NESTUCCA RIVER RESTORATION  
 SITE - NESTUCCA BASIN