

OREGON DEPARTMENT OF FISH AND WILDLIFE

DIETZ CREEK PRE-TX (N-134)

HABITAT INVENTORY

Report Date: 5/6/03

Survey Date:

1/22/03

REACH		T01N-R09W-S23NW					REACH					
Habitat Type	Number Units	HABITAT DETAIL					Substrate					
		Total Length (m)	Avg Width (m)	Avg Depth (m)	Total Area (m ²)	Large Boulders (#>0.5m)	Percent Wetted Area					
		S/O	Snd	Grvl	Cbl	Bldr	Bdrk					
CASCADE/BOULDERS	5	104	3.4	0.46	364	0	0	10	28	28	28	6
DRY CHANNEL	1	23	4.1	0.00	92	0	0	10	15	30	45	0
POOL-BACKWATER	1	16	1.5	0.25	24	0	1	54	10	15	20	0
POOL-LATERAL SCOUR	6	48	4.2	0.49	200	0	1	15	40	32	10	2
POOL-PLUNGE	2	11	5.9	0.70	61	0	8	28	23	23	20	0
POOL-STRAIGHT SCOUR	1	12	5.3	1.30	64	0	5	15	35	35	5	5
RAPID/BOULDERS	7	172	4.0	0.39	698	0	0	10	32	29	29	0
RIFFLE	7	172	4.5	0.36	795	0	0	15	40	34	10	0
STEP/LOG	2	1	3.3	0.13	3	0	0	5	90	5	0	0
Total:	32	557	4.1	0.43	2,301	0	Avg 1	15	37	28	18	1

HABITAT SUMMARY								
Habitat Group	Number Units	Total Length (m)	Avg Width (m)	Avg Depth (m)	Wetted Area		Large Boulders	
					(m ²)	Percent	Number	(# / 100m ²)
Dammed & BW Pools	1	16	1.5	0.25	24	1.04%	0	0.0
Scour Pools	9	71	4.7	0.63	325	14.13%	0	0.0
Glides	0	0			0	0.00%	0	0.0
Riffles	7	172	4.5	0.36	795	34.54%	0	0.0
Rapids	7	172	4.0	0.39	698	30.33%	0	0.0
Cascades	5	104	3.4	0.46	364	15.82%	0	0.0
Step/Falls	2	1	3.3	0.13	3	0.13%	0	0.0
Dry	1	23	4.1	0.00	92	4.01%	0	0.0
Culverts	0	0			0	0.00%	0	0.0

POOL SUMMARY		
	<u>Total</u>	<u># / Km</u>
All Pools:	10	19.3
Pools >=1m deep:	1	1.9
Complex pools (LWD pieces>=3):	3	5.8
Pool frequency (channel widths/pool):	6.8	
Residual pool depth (avg):	0.43	

STREAM SUMMARY

DIETZ CREEK PRE-TX (N-134)

Number Units	Total Length (m)	Avg Width (m)	Avg Depth (m)	Total Area (m ²)	Substrate Percent Wetted Area						Large Boulders (#>0.5m)
					S/O	Snd	Grvl	Cbl	Bldr	Bdrk	
32	557	4.1	0.43	2,301	1	15	37	28	18	1	

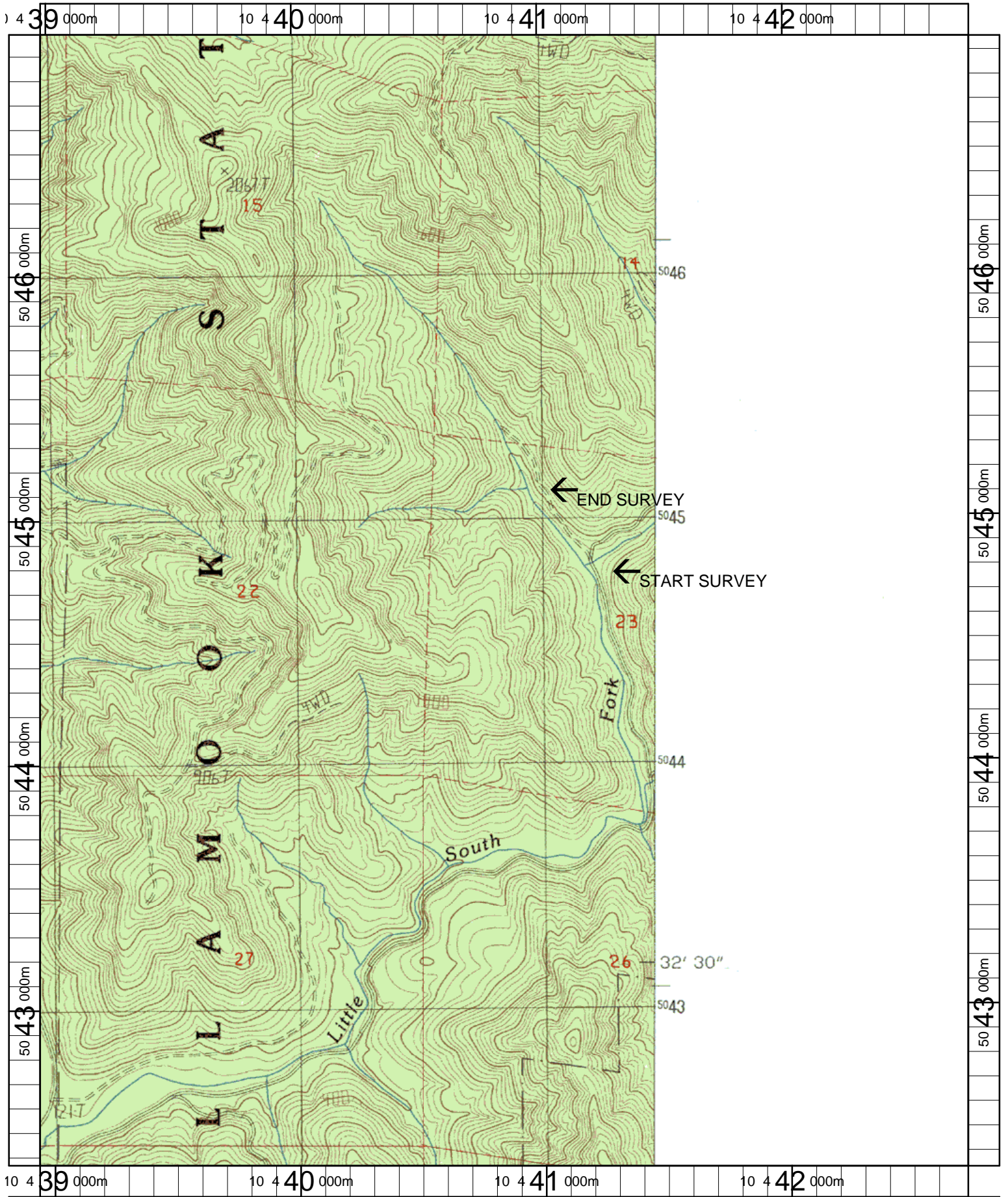
Habitat Group	Wetted Area	
	(m ²)	Percent
Dammed & BW Pools	24	1.04%
Scour Pools	325	14.13%
Glides	0	0.00%
Riffles	795	34.54%
Rapids	698	30.33%
Cascades	364	15.82%
Step/Falls	3	0.13%
Dry	92	4.01%
Culverts	0	0.00%

Comment Summary

Restoration Monitoring Sites 2003

MONITORING AREA: 1-NC SITE ID: 134 DIETZ CREEK PRE-TX (N-134)

UNIT#	TYPE	CHAN	DIST. (m)	COMMENTS	NOTE ESTIMATOR	NOTE NUMERATOR
1	RB	00	25.8		T=9C/0915	
2	PP	00	32	DJ		
3	CB	00	53	SS/, AS/		
4	LP	00	60.8	/LS		
5	SL	00	61.1		H=.35M	
6	RI	00	85.4		ORANGE FLAG SITE #1	
8	LP	00	129.9	DJ		
9	SL	00	130.7		H=.8M	
14	DC	02	199.6		DRY CHNL	
15	PP	00	204.1	SS/		
19	RB	00	307	LS/		
20	SP	00	319	LS/		
28	BW	10	418.6	SS/		
32	CB	00	518.8	DJ, SS/	T=9C/1230, TJ UPSTREAM	



Name: KILCHIS RIVER
 Date: 3/20/2003
 Scale: 1 inch equals 1666 feet

Location: 10 440846 E 5044661 N
 Caption: DIETZ CREEK RESTORATION SITE - KILCHIS BASIN