

OREGON DEPARTMENT OF FISH AND WILDLIFE

DEVILS LAKE FK UPPER POST-TX (N-133)

HABITAT INVENTORY

Report Date: 5/6/03

Survey Date:

2/19/03

REACH		T01N-R05W-S08NW						REACH					
HABITAT DETAIL													
Habitat Type	Number	Total	Avg	Avg	Total	Large	Substrate						
	Units	Length	Width	Depth	Area	Boulders	Percent Wetted Area						
		(m)	(m)	(m)	(m ²)	(#>0.5m)	S/O	Snd	Grvl	Cbl	Bldr	Bdrk	
POOL-DAMMED	2	20	2.8	0.68	56	0	5	52	22	18	4	0	
POOL-LATERAL SCOUR	1	9	3.4	0.80	31	0	29	29	39	2	0	0	
RIFFLE	13	523	3.6	0.25	2,020	0	15	22	34	19	8	2	
STEP/LOG	2	1	1.8	0.30	2	0	33	38	28	3	0	0	
Total:	18	553	3.3	0.33	2,108	0	Avg 17	27	32	16	6	1	

HABITAT SUMMARY									
Habitat Group	Number	Total	Avg	Avg	Wetted Area		Large Boulders		
	Units	Length	Width	Depth	(m ²)	Percent	Number	(# / 100m ²)	
		(m)	(m)	(m)					
Dammed & BW Pools	2	20	2.8	0.68	56	2.64%	0	0.0	
Scour Pools	1	9	3.4	0.80	31	1.45%	0	0.0	
Glides	0	0			0	0.00%	0	0.0	
Riffles	13	523	3.6	0.25	2,020	95.82%	0	0.0	
Rapids	0	0			0	0.00%	0	0.0	
Cascades	0	0			0	0.00%	0	0.0	
Step/Falls	2	1	1.8	0.30	2	0.09%	0	0.0	
Dry	0	0			0	0.00%	0	0.0	
Culverts	0	0			0	0.00%	0	0.0	

POOL SUMMARY

	<u>Total</u>	<u># / Km</u>
All Pools:	3	5.8
Pools >=1m deep:	0	0.0
Complex pools (LWD pieces>=3):	1	1.9
Pool frequency (channel widths/pool):	24.8	
Residual pool depth (avg):	0.50	

STREAM SUMMARY

DEVILS LAKE FK UPPER POST-TX (N-133)

Number Units	Total Length (m)	Avg Width (m)	Avg Depth (m)	Total Area (m ²)	Substrate Percent Wetted Area						Large Boulders (>0.5m)
					S/O	Snd	Grvl	Cbl	Bldr	Bdrk	
18	553	3.3	0.33	2,108	17	27	32	16	6	1	

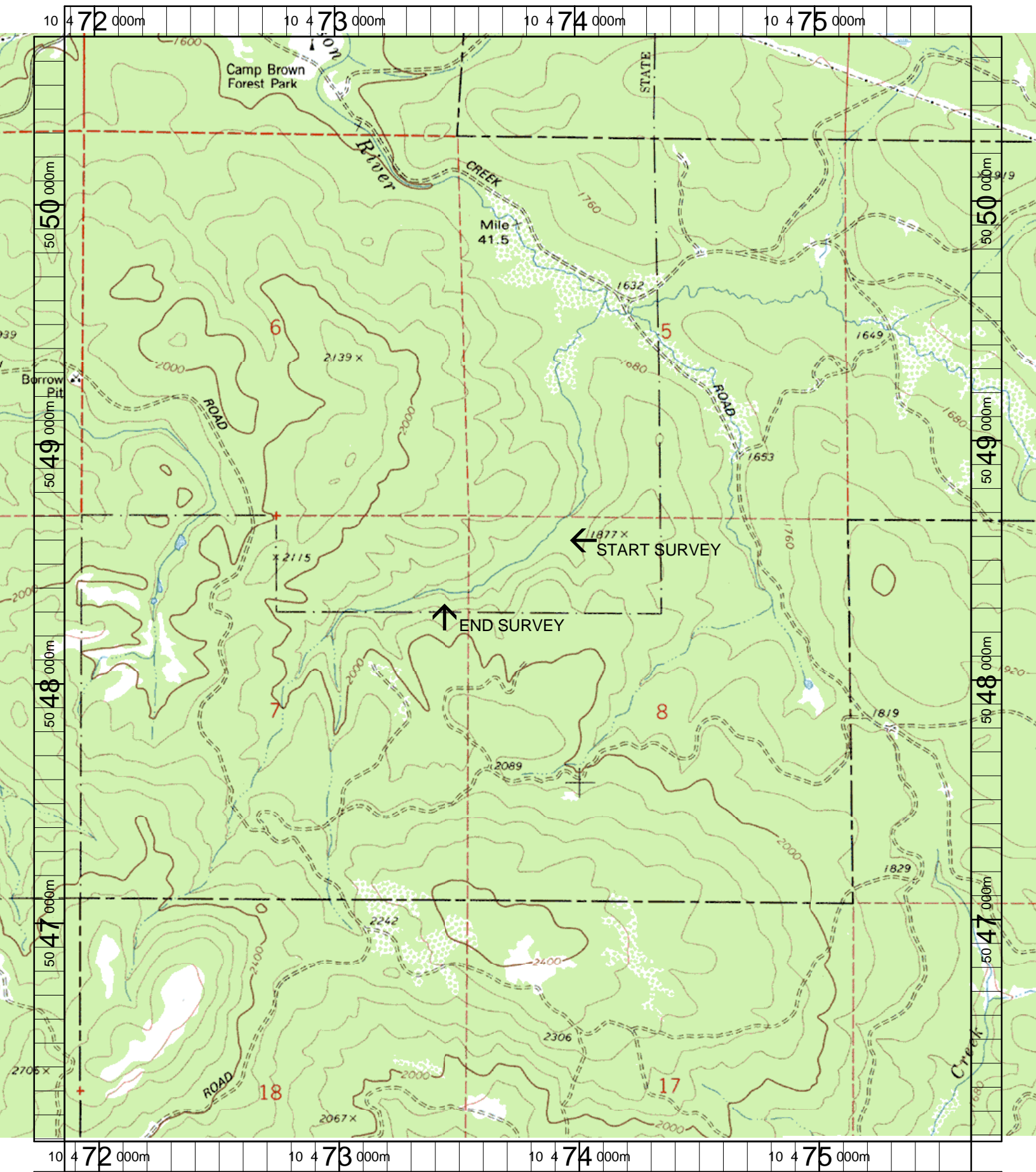
Habitat Group	Wetted Area	
	(m ²)	Percent
Dammed & BW Pools	56	2.64%
Scour Pools	31	1.45%
Glides	0	0.00%
Riffles	2,020	95.82%
Rapids	0	0.00%
Cascades	0	0.00%
Step/Falls	2	0.09%
Dry	0	0.00%
Culverts	0	0.00%

Comment Summary

Restoration Monitoring Sites 2003

MONITORING AREA: 1-NC SITE ID: 133 DEVILS LAKE FK UPPER POST-TX (N-133)

<u>UNIT#</u>	<u>TYPE</u>	<u>CHAN</u>	<u>DIST. (m)</u>	<u>COMMENTS</u>	<u>NOTE ESTIMATOR</u>	<u>NOTE NUMERATOR</u>
1	RI	00	50	BV, HS	T=6C	
2	RI	00	99	BV, HS		
4	RI	00	158	/TJ		
7	RI	00	258	HS		
8	RI	01	280.7	TJ/, HS		
10	DP	00	291.1	SS/		
11	RI	00	341.1	/SS		
16	SL	01	476.1		H=.5	
17	SL	01	476.8		H=.7	



<p>Name: ROARING CREEK Date: 3/20/2003 Scale: 1 inch equals 1666 feet</p>	<p>Location: 10 473749 E 5048392 N Caption: DEVILS LAKE FORK (UPPER) RESTORATION SITE - WILSON BASIN</p>
---	---